



**Natura 2000 –
Management-Planning
for the
Elbe Estuary**



Natura 2000-Managementplanning for the Elbe Estuary

1. EU Biodiversity Policy and Nature Legislation
2. Natura 2000 in the Elbe Estuary
3. The Planning-Process
4. Sediment Management – a Crucial Issue



2. Natura 2000 in the Elbe-Estuary.

Natura 2000 : 10 SACs and 5 SPAs (IBA- and Ramsar-Sites)



6th International SedNet Conference / Special Session: Managing the Elbe Estuary
Dr. Elisabeth Klocke, 9 October 2009



Conservation objectives according to standard data forms:

- 12 habitat types (annex I HD)
- 11 species (annex II HD)
- 45 species of naturally occurring wild birds (annex I BD)



2. Natura 2000 in the Elbe Estuary.

Conservation Status - Meeting the Obligations

The memberstates of the EU have to report the conservation status of Natura 2000 (habitats and species) periodically every 6 years to the European Commission.

The conservation status of the estuaries of the Ems, Elbe and Weser has been determined as being „not favourable“ (C).

This means that the affected federal states have to take obligatory action to improve the conservation status.



3. The Planning-Process.

Goals of a Natura 2000-Managementplan

- common objectives for nature conservation
- proposals for measures to achieve the objectives
- guidance for projects and measures
- additional basis for the assessment of plans or projects
- legal framework for maintenance dredging
- improvement of planning security



3. The Planning-Process.

Legal Character:

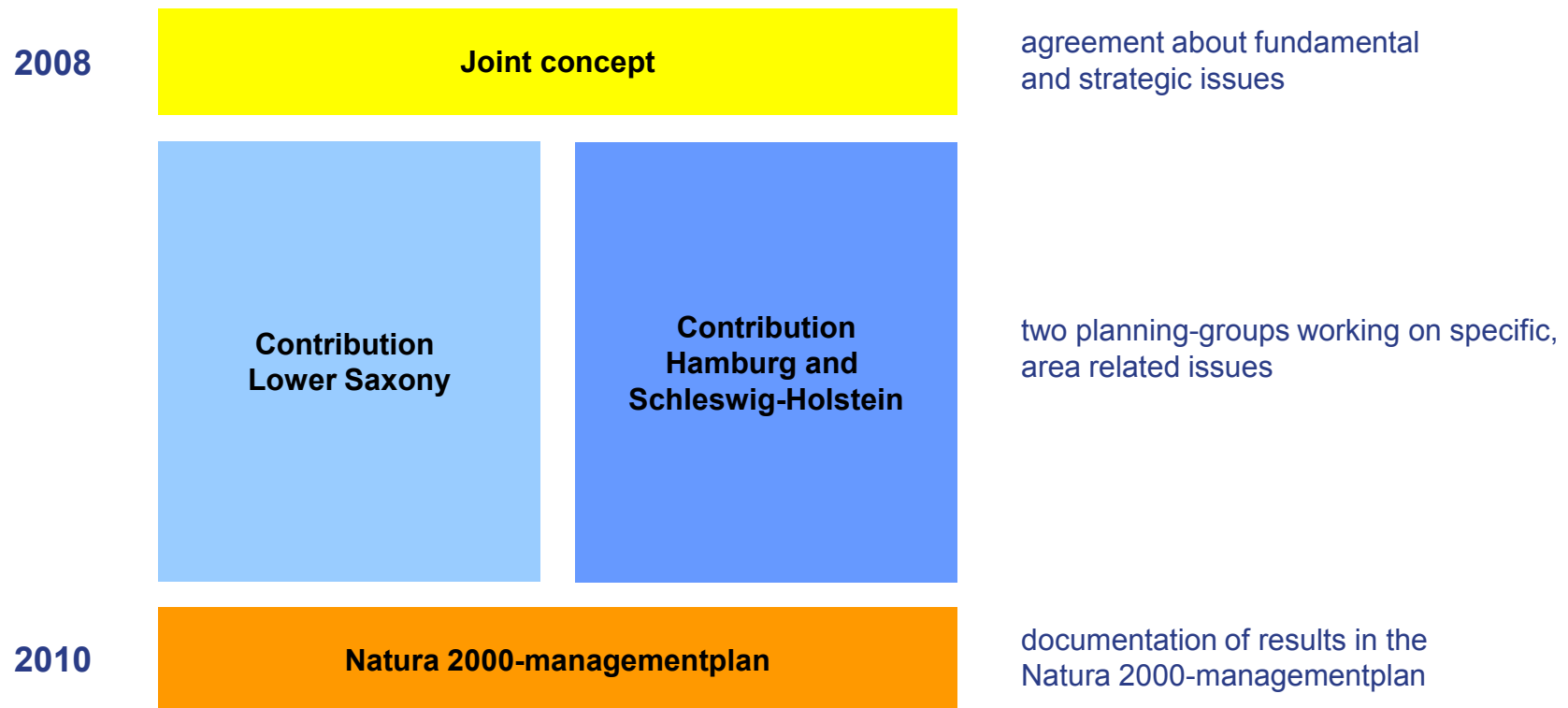
The Natura 2000-managementplan

- is a joint, trans-state plan,
- has no legal binding force,
- is a guideline for state actions,
- is aimed at voluntary commitment of all stakeholders.



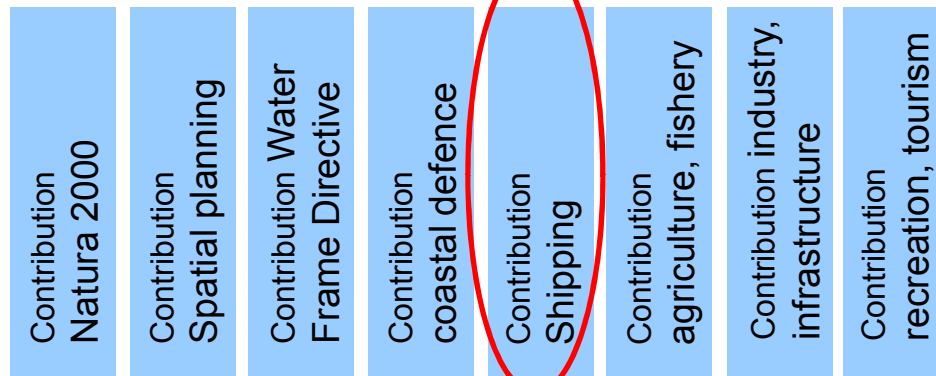
3. The Planning-Process.

Cooperation of the Federal States of Hamburg, Lower Saxony and Schleswig-Holstein



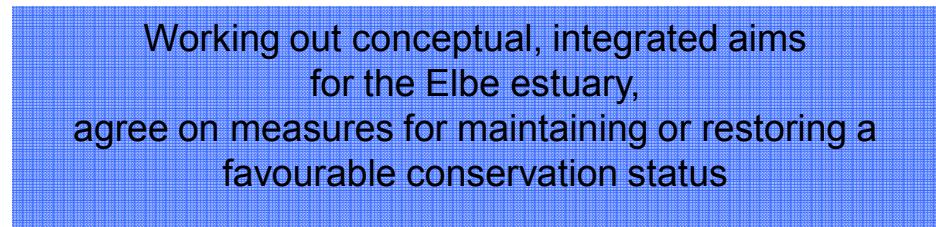
3. The Planning-Process.

Course of action for the planning groups

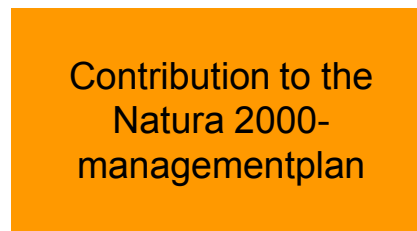


crucial issue

Description of goals for the estuary from the specific point of view



Description of common aims and conflicts

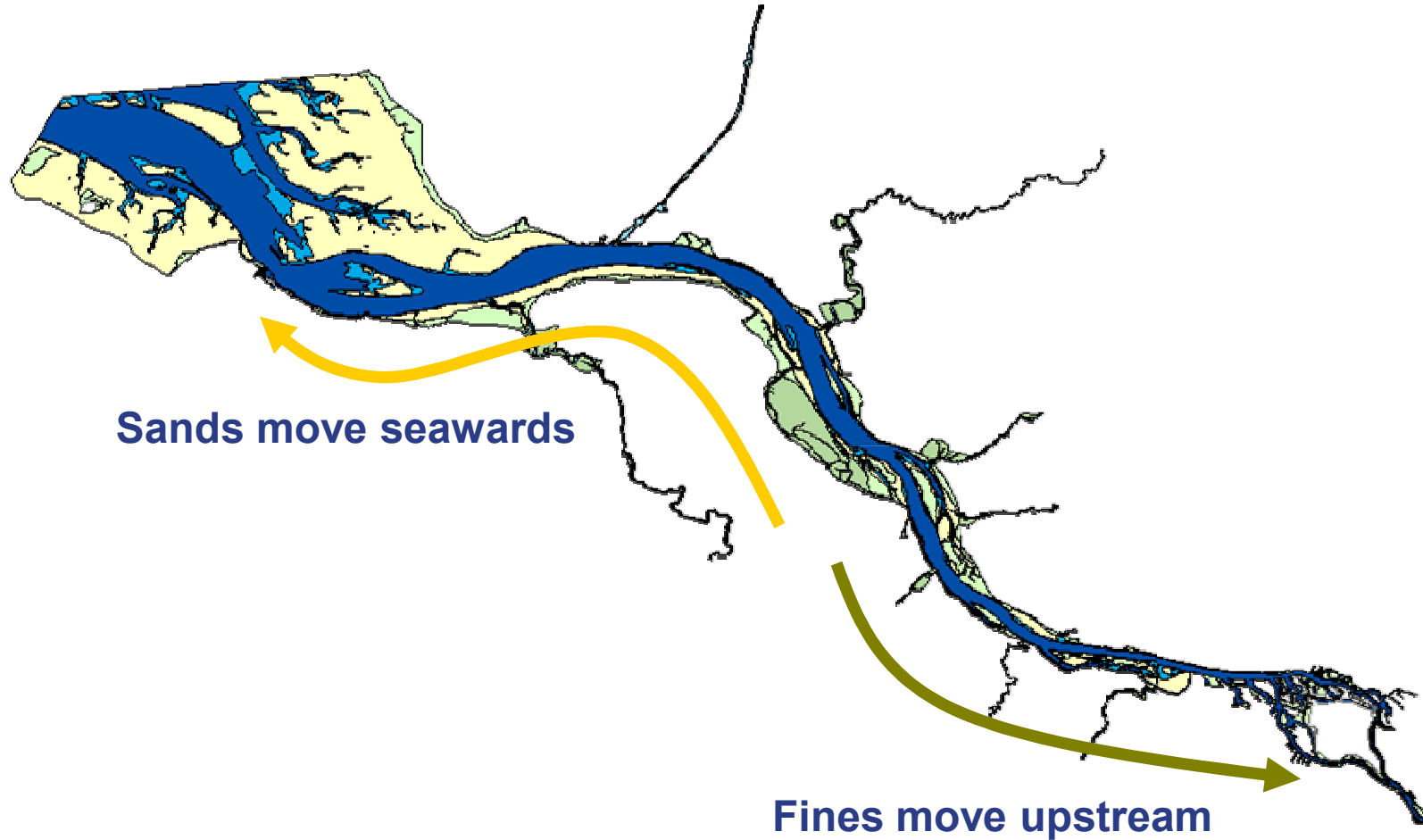


Contributions from Hamburg/Schleswig-Holstein and Lower Saxony are going to be put together to become one plan



4. Sediment-Management – a Crucial Issue.

Main components of sediment fluxes

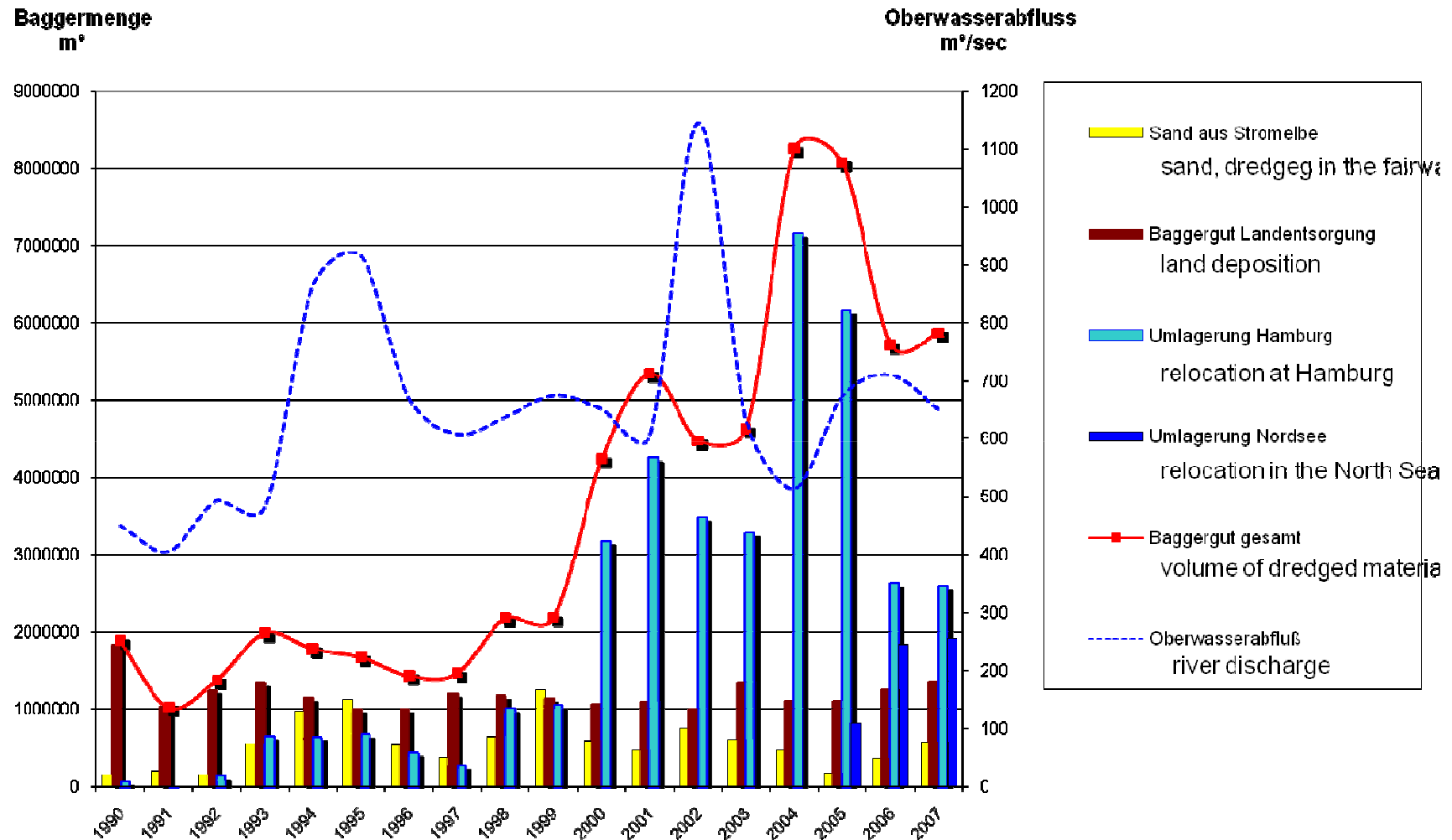


Disequilibrium of sediment budgets

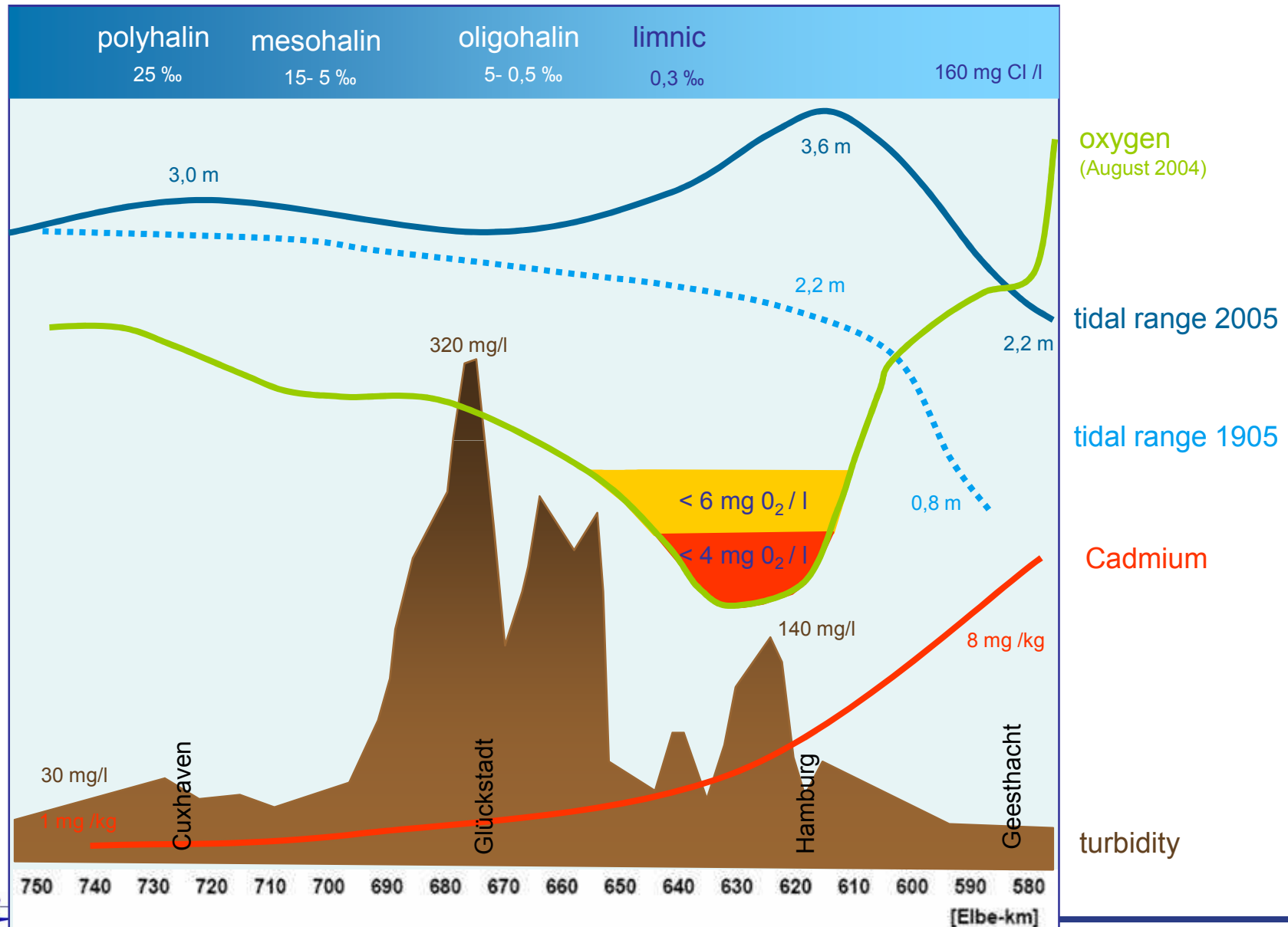


4. Sediment-Management – a Crucial Issue.

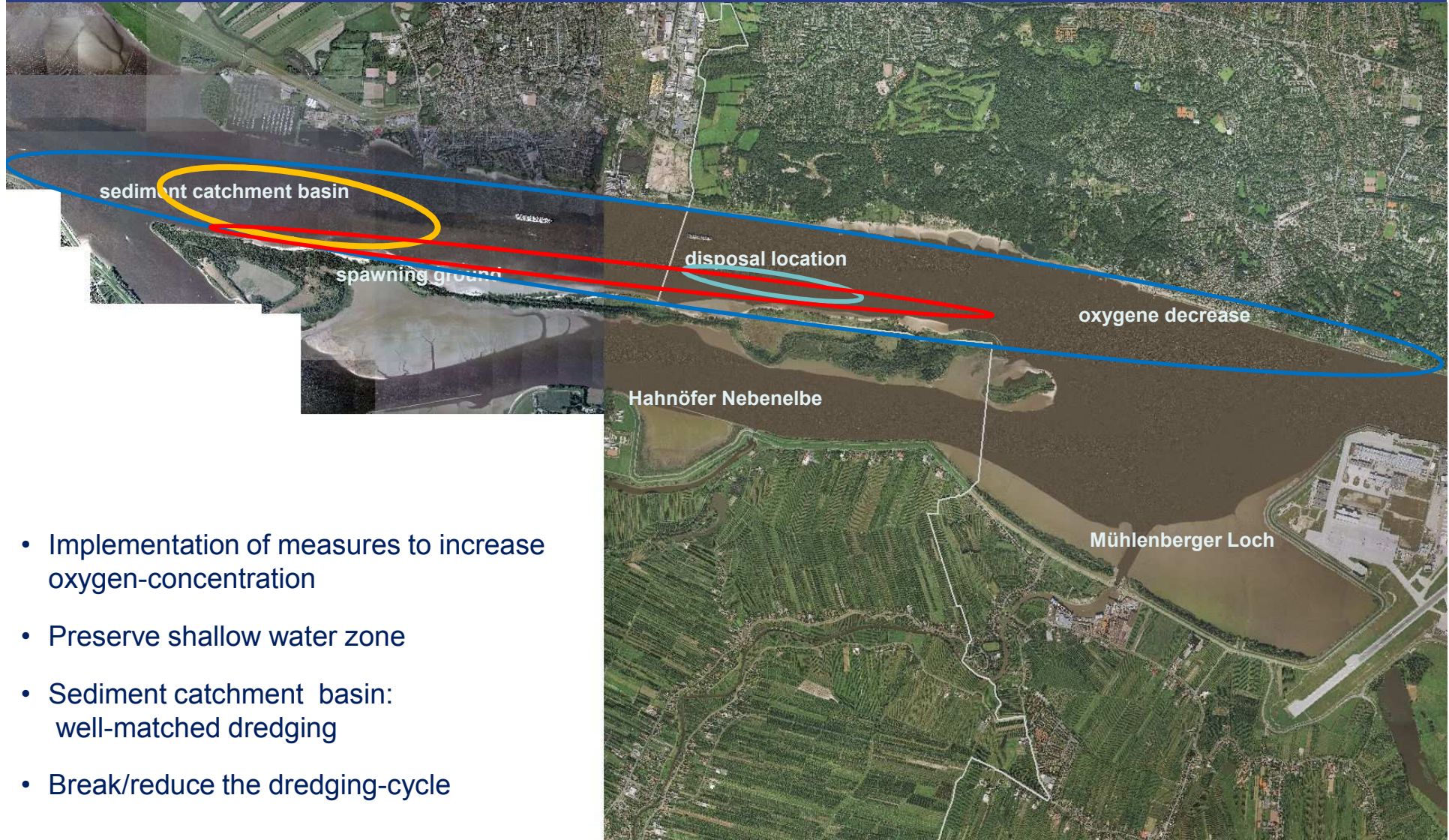
Dredging Data (Hamburg) and River Discharge



4. Sediment-Management – a Crucial Issue.



4. Sediment-Management – a Crucial Issue.



- Implementation of measures to increase oxygen-concentration
- Preserve shallow water zone
- Sediment catchment basin: well-matched dredging
- Break/reduce the dredging-cycle

4. Sediment-Management – a Crucial Issue.



siltation of branches

Problems:

- Unbalanced sediment budget
- Falling tidal low water level
- Reflux of sediment (Cycle)
- Siltation of branches

Limited Scope:

- Oxygen deficiency
- Pollution
- Fish/protected species
- Benthic fauna

Comparative study to evaluate long-term effects of maintenance strategies on the whole regime

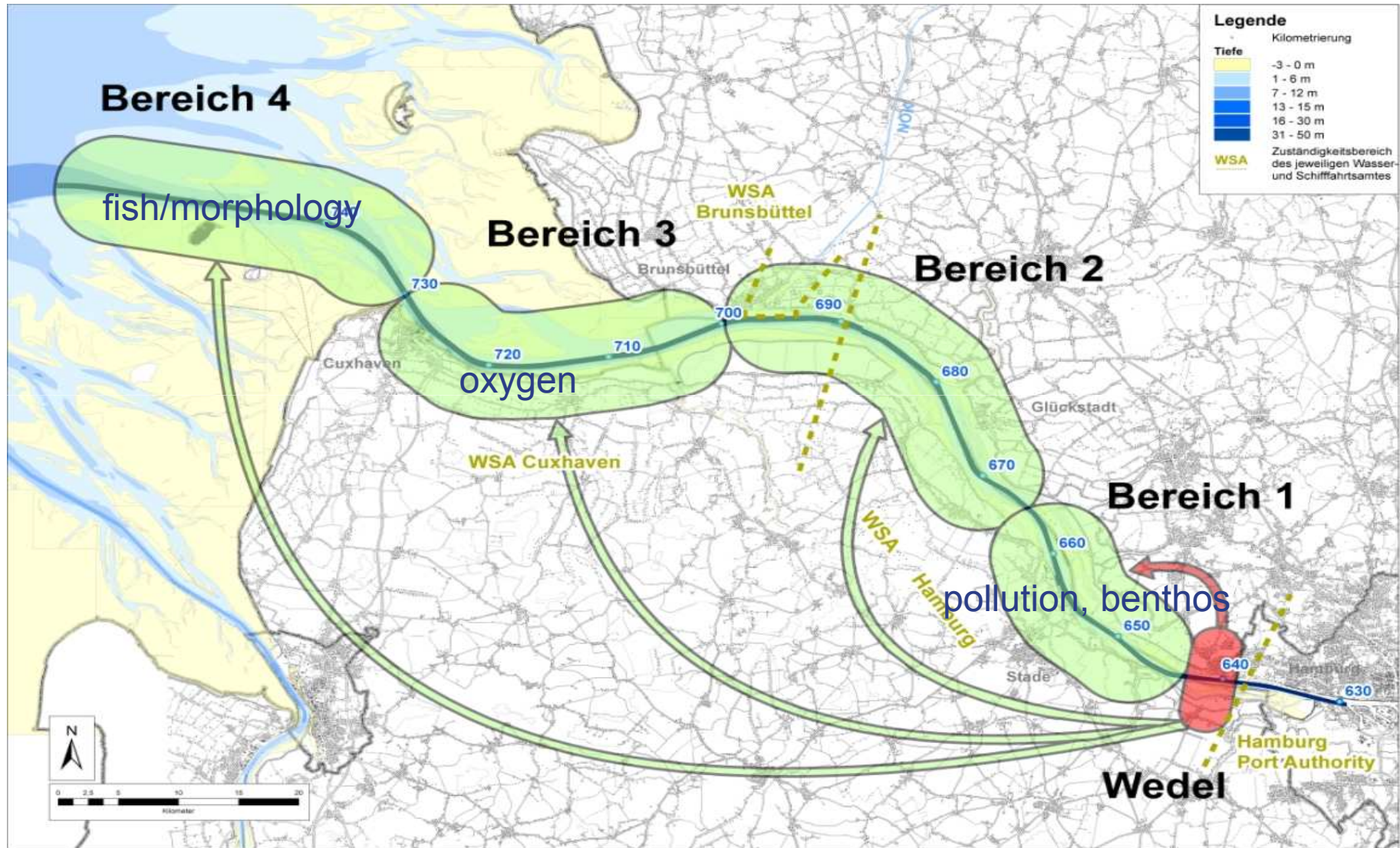
Conflicts of aims concerning ecology:

- Oxygene levels, siltation on mudflats
- Contamination, spatial limitation versus distribution
- Food chains

Result: Recommendation depending on focus, wide-range relocation shows advantages

4. Sediment-Management – a Crucial Issue.

Comperative Study: Consideration of Different Scenarios



4. Sediment-Management – a Crucial Issue.

Framework / New Relocation Strategy

in discussion

Possible solution: Priorities integrated in a goal system

- Maintenance of the fairway
- Compliance with environmental legislation and administrative fiats
- Balancing the sediment budgets for the long term
- Consideration of short-term or locally ecological criteria
- Cost effectiveness
- Other ecological goals

Integrated concept:

- Monitoring
- Steady adjustment of relocation strategy and monitoring scheme in reconciliation with environmental administration and NGOs



Thank you very much for your attention.

www.natura2000-unterelbe.de

Freie und Hansestadt Hamburg
Ministry for Urban Development
and Environment

Niedersachsen
Lower Saxony Water Management, Coastal Defence
and Nature Conservation Agency

Schleswig-Holstein
Ministry for agriculture, environment
and the Countryside

Federal Waterways Administration
Directorate "North"

Hamburg Port Authority

contact:

Dr. Elisabeth Klocke
Ministry for Environment and Urban Development
Stadthausbrücke 8
20355 Hamburg
Tel. ++49-40/428 40 3586
Fax:++49-40/427 94 0179
E-Mail: elisabeth.klocke@bsu.hamburg.de

