

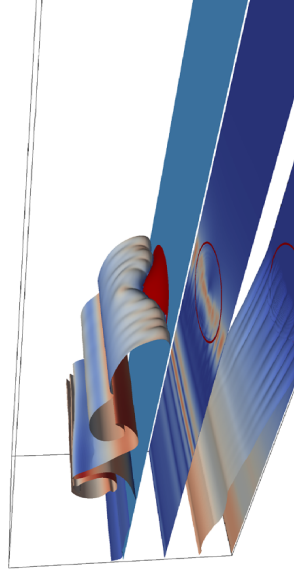
International Scientific Committee

- o Balachandar S. (University of Florida, USA)
- o Blondeaux, P. (University of Genova, Italy)
- o Brocchini, M. (Università Politecnica delle Marche, Italy)
- o Dong, P. (University of Dundee, U.K.)
- o Elghobashi S., University of California Irvine, USA
- o Guillou, S. (University of Caen, France)
- o Hsu, T.J. (University of Delaware, USA)
- o Izumi, N. (Hokkaido University, Japan)
- o Jenkins, J. T. (Cornell University, USA)
- o Meiburg E. (University of California, USA)
- o Nguyen, K.D (Laboratory for Hydraulics Saint-Venant, France)
- o Pham-Van-Bang, D. (Laboratory for Hydraulics Saint-Venant, France)
- o Simonin, O. (Institute National Polytechnique de Toulouse, France),
- o Shimizu, Yi (Hokkaido University, Japan)
- o Soldati, A. (University of Udine, Italy)
- o Uhlmann M., KIT Karlsruhe, Germany
- o Wang, G.Q. (Tsing-Hua University, China)

Local Organising Committee

- K.D. Nguyen (Lab. St. Venant)
- M. Benoit (EDF – Lab. St Venant)
- S. Guillou (University of Caen, France)
- N. Sheibani (SHF)
- J.G Philipps (SHF)
- D. Pham Van Bang (Lab. St Venant)

Workshop language is English



Venue:

The THESIS-2013 will be held at the site of the **Electricité de France Research & Development (EDF R&D)**

6 Quai Watier 78400 Chatou (Parisian Region). This site is located at 14 km from Paris, in the Island of Impressionists on the Seine River

Contact :
n.sheibani@shf-hydro.org

SOCIETE HYDROTECHNIQUE DE FRANCE

25 rue des Favorites - F- 75015 PARIS

Tél. 33 (0)1.42.50.91.03
Fax 33 (0)1.42.50.59.83

Registration fees:

430 € : normal participants;
345 € : AIHR, SHF, AFM & academic members;
200 € : Ph.D. students ;

By Check to SHF or by Bank transfer
Online: www.shf-hydro.org



THESIS 2013

CALL FOR ABSTRACTS

Two-phHase modelling for Sediment dynamics

*Symposium on Two-phase
Modelling for Sediment Dynamics
in Geophysical Flows*

**Chatou (France)
June 10-12, 2013**

Symposium Objectives:

Sediment transport is a key research issue to many geophysical applications: sediment deposition and re-suspension processes in rivers and estuaries, morphological evolution of waterways and coastal zones, formation and displacement of turbidity maxima in estuaries, impacts of sediment drainage, breaching process in dyke- and dam-break flows, etc. In this research field, two-phase approaches have been more and more developed since they describe the physical processes responsible for sediment transport more realistically than a single-phase approach.

The *THESIS-2013 (Symposium on Two-phase Modelling for Sediment dynamics in Geophysical Flows)* has the following objectives:

1. To establish a forum for discussing and exchanging experience and knowledge within the international research community for developing two-phase approaches applicable to sediment dynamics in geophysical flows;
2. To review the state-of-the-art of the two-phase approach for sediment dynamics;
3. To promote international cooperation in this research domain.

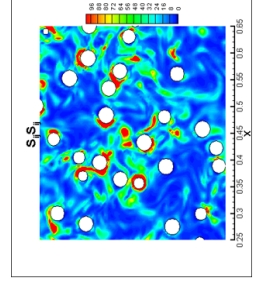
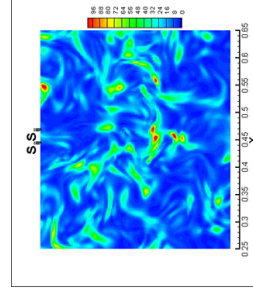


Symposium topics:

- Fundamentals (physical processes, mathematical formulations and parameterisation)
- Two-phase flow modelling (numerical techniques, turbulence modelling)
- Experimental techniques in laboratories and in the field
- Environmental applications: Sheet flows, highly concentrated flows, landslide/debris flows, Internal flows (erosion around pipelines and hydraulic sluices) and groundwater flows (porous media), Nutrient/contaminants transported by sediments, Vegetated channels, riverbank restoration, Breaching processes in dyke-overlap and dyke-break flows

Form and size of the symposium:

- Opening to the international community (under patronage of SHF and IAHR)
- Presentation forms: Oral and posters
- Six plenary key-lectures
- Duration: **3 days** with plenary and parallel sessions



Symposium Perspectives:

- Promote a THESIS Community for sediment transport research by two-phase approaches. The activities of such Community would include knowledge exchange, experiences and finding; preparing proposals for new national and international research programmes
- Proceedings of the conference are a CD-ROM containing the extended abstract (4 pages paper).
- Excellent papers presented in the workshop will be selected for submission as full papers for review and eventual publication in the journal "Advances in Water Resources"

Important deadlines:

- ◆ **15 September 2012:** abstract submission
- ◆ **15 October 2012:** abstract acceptance

Abstract submission:

Abstracts (between 200 and 1000 words) should be **submitted before September 15, 2012 to n.sheibani@shf-hydro.org**

They should provide detailed information on the objectives of the study, the methodology, the main results and major conclusions.

They should mention the name, affiliation of authors, and Email of the corresponding author.

SHF
25 RUE DES FAVORITES
75015 PARIS
Tel. 33 (1) 42 50 91 03