



# Hav möter Land *Sea meets Land*

Climate water management spatial planning in collaboration

Projectleader Dr. Ingela Isaksson

County Administrative Board of Västra Götaland, Sweden (lead partner)

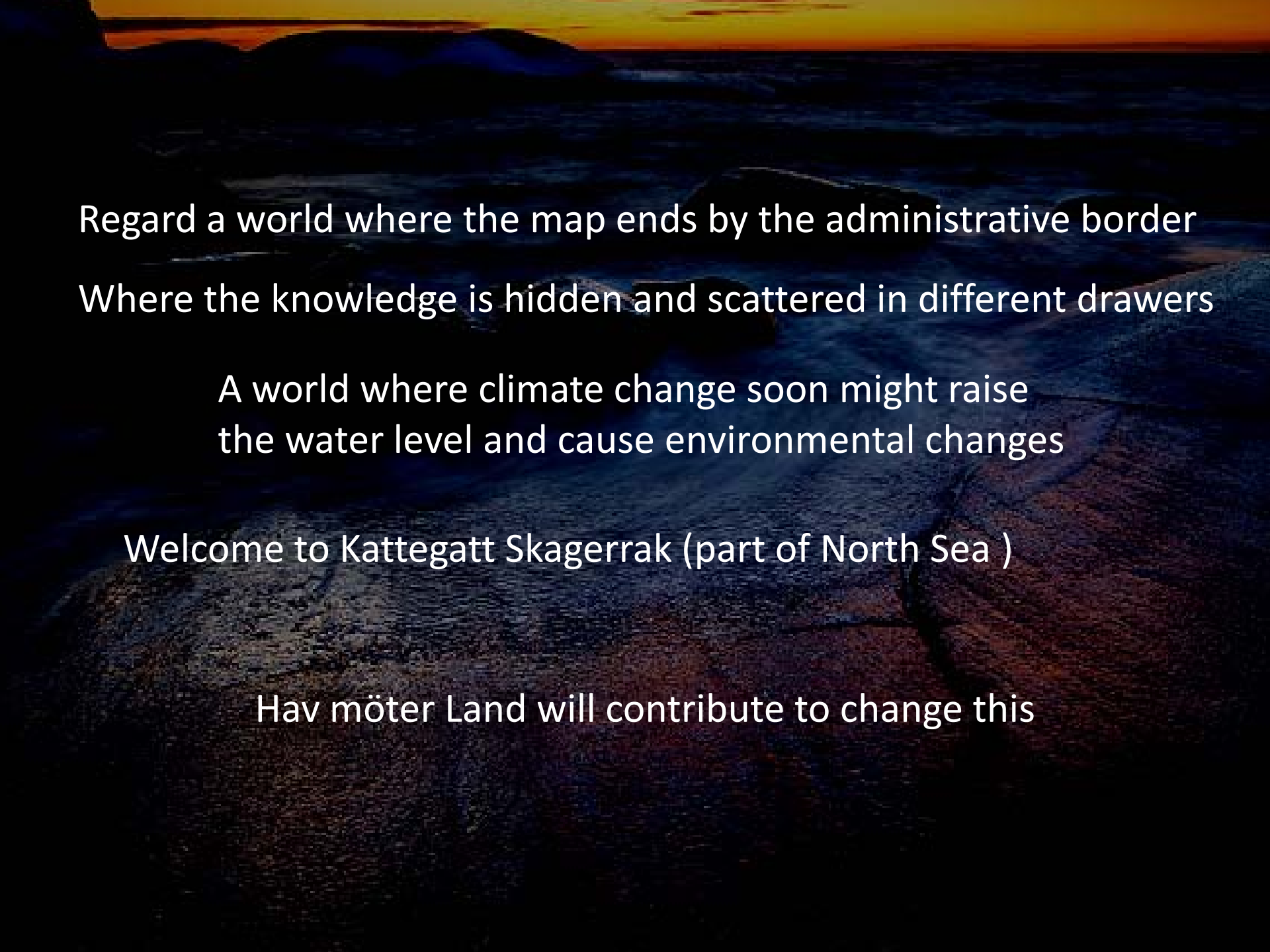
**1 September 2010 – 31 December 2013**

Interreg IVA Kattegatt-Skagerrak programme

[Ingela.isaksson@lansstyrelsen.se](mailto:Ingela.isaksson@lansstyrelsen.se)

SedNet Conference Lissabon 6-9 November 2013





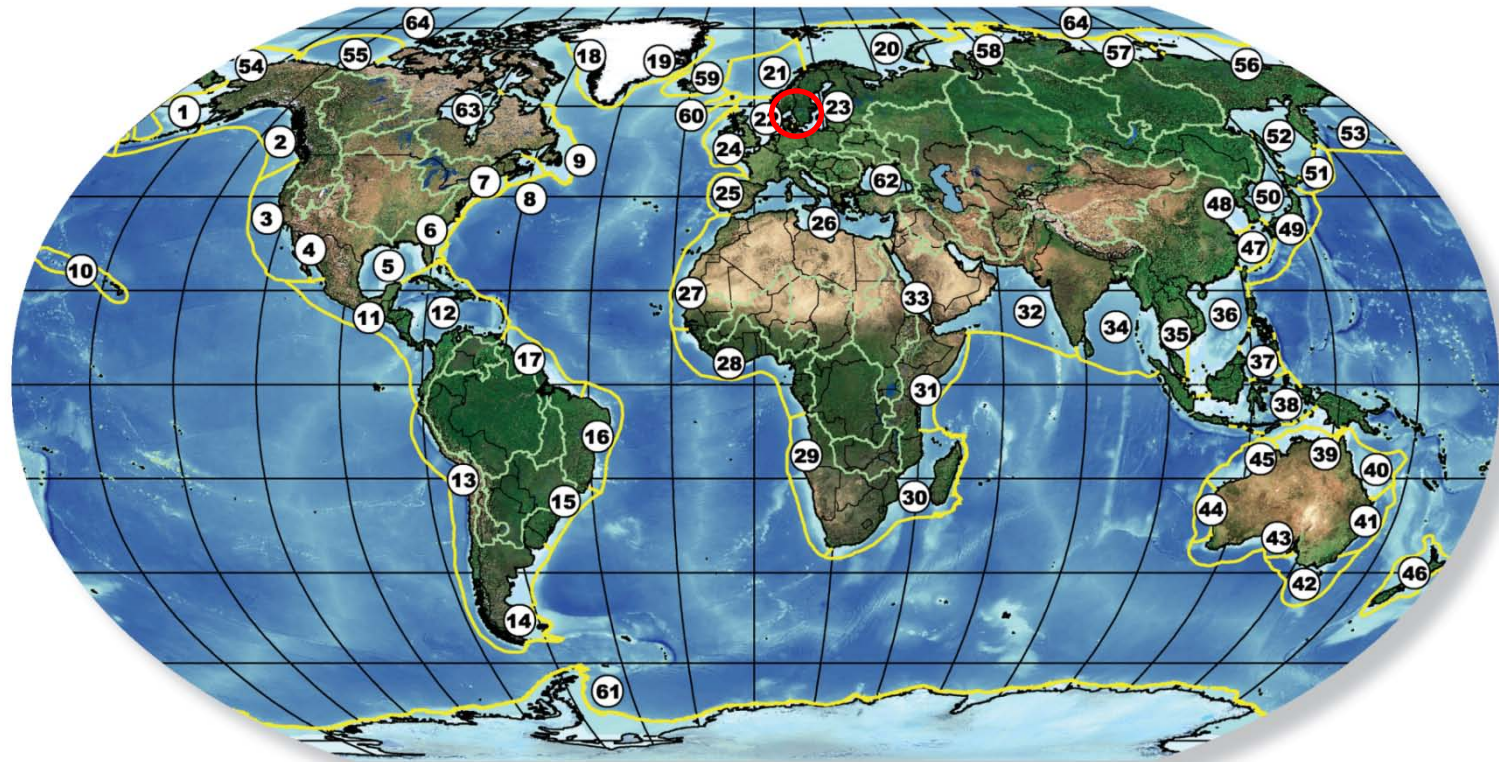
Regard a world where the map ends by the administrative border  
Where the knowledge is hidden and scattered in different drawers

A world where climate change soon might raise  
the water level and cause environmental changes

Welcome to Kattegatt Skagerrak (part of North Sea )

Hav möter Land will contribute to change this

# Large Marine Ecosystems of the World and Linked Watersheds

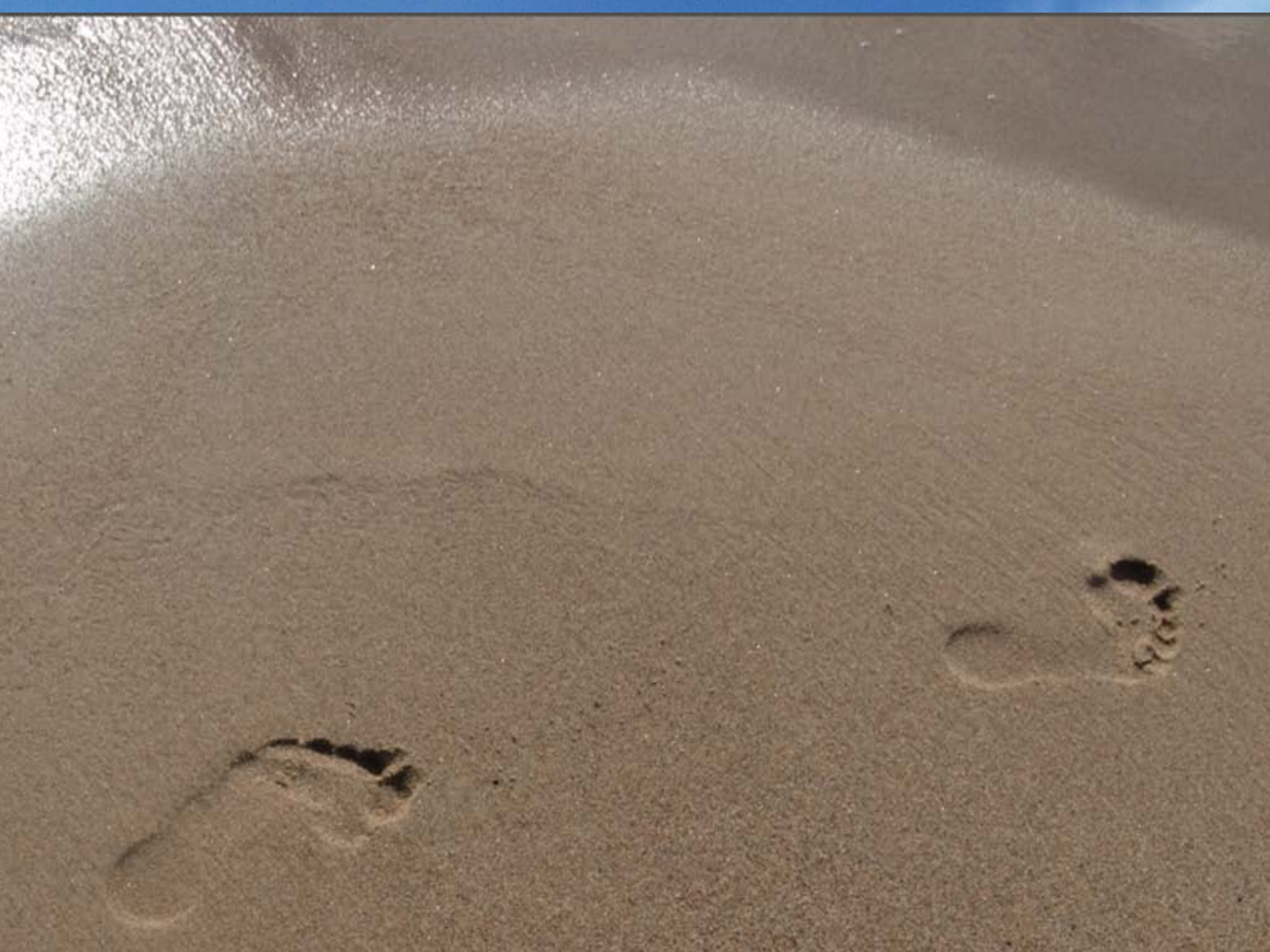


- |                                     |                         |                           |  |                      |                  |
|-------------------------------------|-------------------------|---------------------------|--|----------------------|------------------|
| 1 East Bering Sea                   | 13 Humboldt Current     | 25 Iberian Coastal        | 37 Sulu-Celebes Sea                                  | 48 Yellow Sea        | 60 Faroe Plateau |
| 2 Gulf of Alaska                    | 14 Patagonian Shelf     | 26 Mediterranean Sea      | 38 Indonesian Sea                                    | 49 Kuroshio Current  | 61 Antarctic     |
| 3 California Current                | 15 South Brazil Shelf   | 27 Canary Current         | 39 North Australian Shelf                            | 50 Sea of Japan      | 62 Black Sea     |
| 4 Gulf of California                | 16 East Brazil Shelf    | 28 Guinea Current         | 40 Northeast Australian Shelf-<br>Great Barrier Reef | 51 Oyashio Current   | 63 Hudson Bay    |
| 5 Gulf of Mexico                    | 17 North Brazil Shelf   | 29 Benguela Current       | 41 East-Central Australian Shelf                     | 52 Okhotsk Sea       | 64 Arctic Ocean  |
| 6 Southeast U.S. Continental Shelf  | 18 West Greenland Shelf | 30 Agulhas Current        | 42 Southeast Australian Shelf                        | 53 West Bering Sea   |                  |
| 7 Northeast U.S. Continental Shelf  | 19 East Greenland Shelf | 31 Somali Coastal Current | 43 Southwest Australian Shelf                        | 54 Chukchi Sea       |                  |
| 8 Scotian Shelf                     | 20 Barents Sea          | 32 Arabian Sea            | 44 West-Central Australian Shelf                     | 55 Beaufort Sea      |                  |
| 9 Newfoundland-Labrador Shelf       | 21 Norwegian Shelf      | 33 Red Sea                | 45 Northwest Australian Shelf                        | 56 East Siberian Sea |                  |
| 10 Insular Pacific-Hawaiian         | 22 North Sea            | 34 Bay of Bengal          | 46 New Zealand Shelf                                 | 57 Laptev Sea        |                  |
| 11 Pacific Central American Coastal | 23 Baltic Sea           | 35 Gulf of Thailand       |  | 58 Kara Sea          |                  |

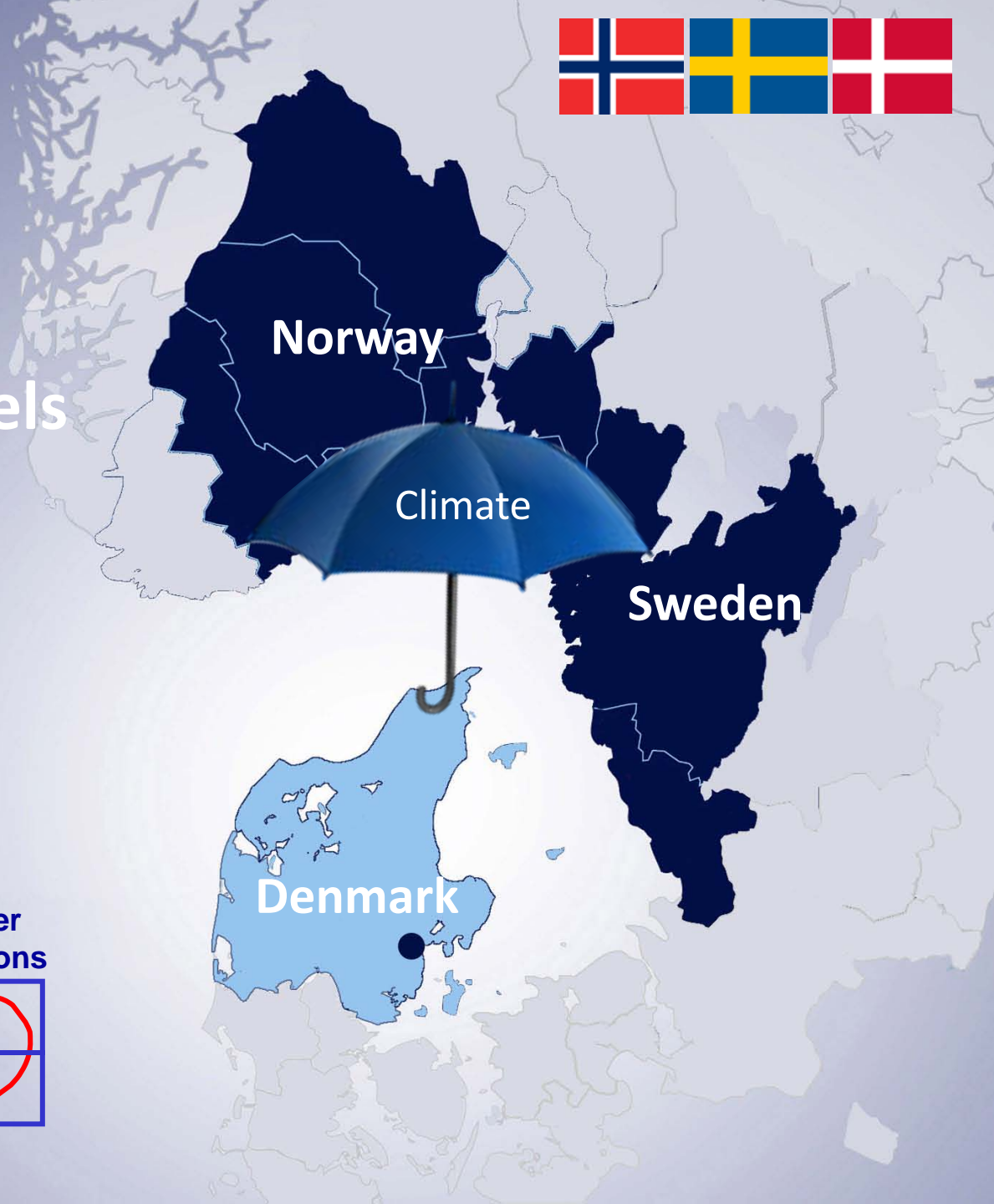
With courtesy from professor Kenneth Sherman NAOO, USA

Hav møter Land





3 countries  
3 main topics  
26 organisations  
3 administrative levels  
80 persons



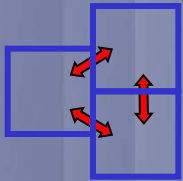
Norway

Climate

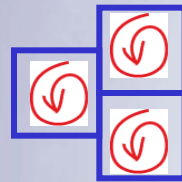
Sweden

Denmark

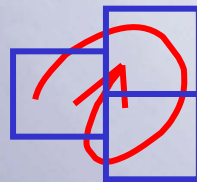
Exchange of  
experiences



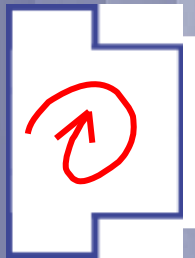
3 countries



Crossborder  
collaborations



Challenges in  
common –  
crossborder  
strategies





# Arena for the future

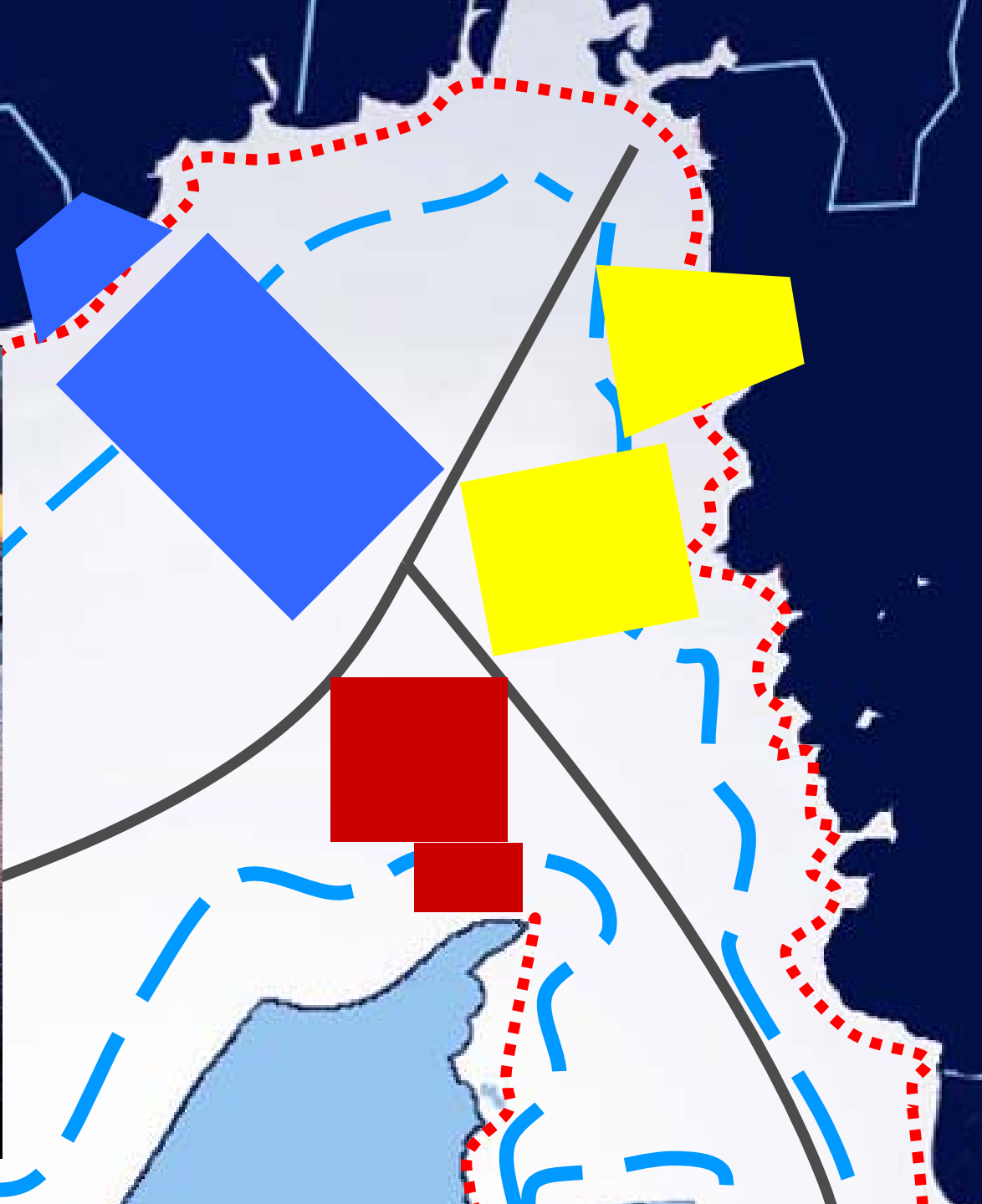
To find common solutions for common challenges

A large group of approximately 40 people, including men and women of various ages, are posing for a group photo on a wooden walkway or boardwalk. They are standing in several rows, with some leaning on the wooden railing. The background shows a body of water, likely the ocean, under a clear sky. The overall atmosphere is positive and collaborative.

Crossborder collaboration  
Building up a network  
regardless of administrative  
borders







# Overarching methodology - use a common language – Open Standards for the Practice of Conservation and adaptive management



## 1. Conceptualize

- Define team
- Define scope, vision, targets
- Identify critical threats
- Complete situation analysis



## 2. Plan Actions and Monitoring

- Develop goals, strategies, and objectives
- Develop monitoring plan
- Evaluate capacity and risk



## 4. Analyze, Use, Adapt

- Analyze data
- Analyze interventions
- Communicate within team
- Adapt plans

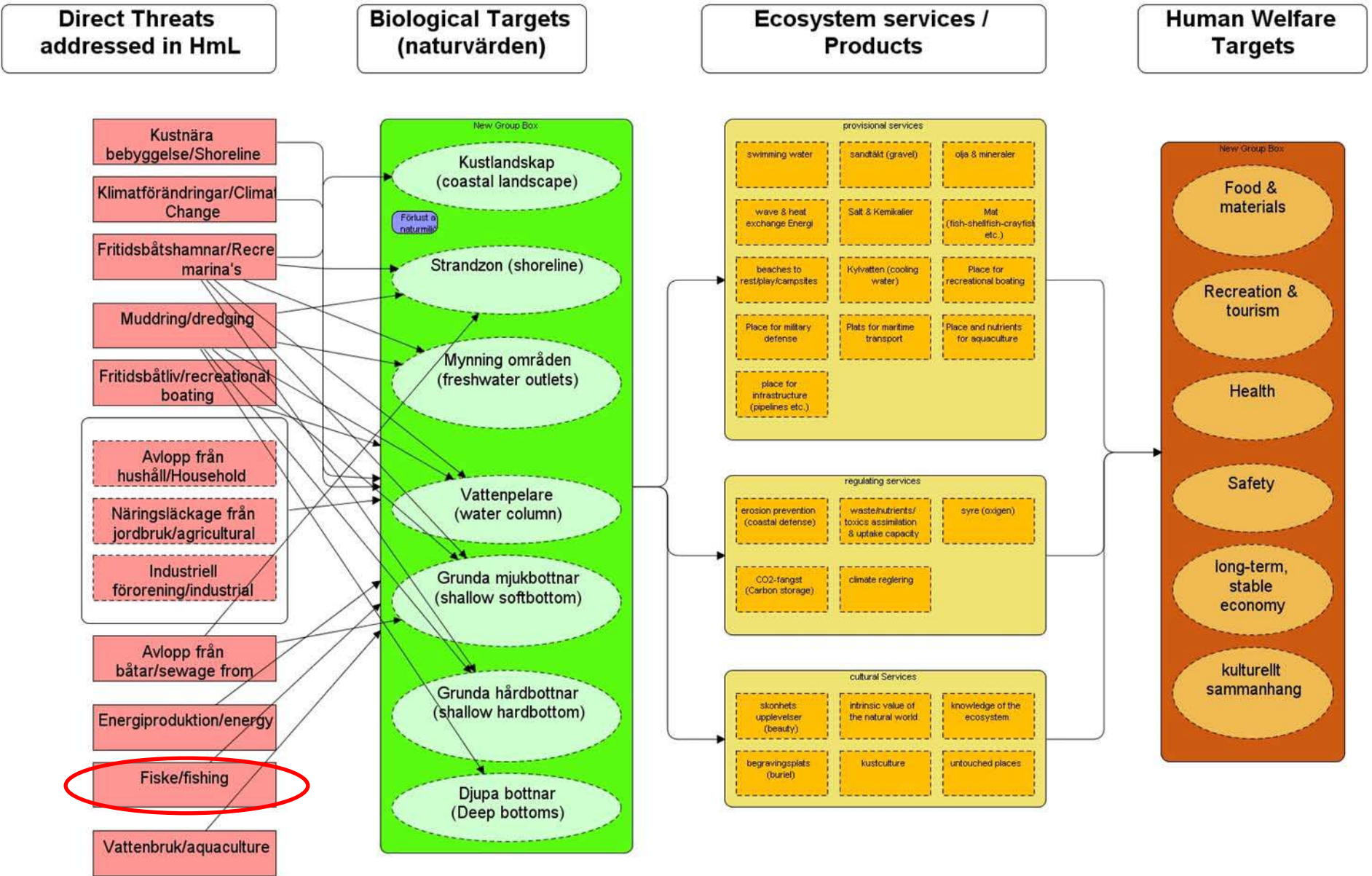
## 3. Implement Actions and Monitoring

- Develop work plans
- Implement work plans
- Refine work plans

## 5. Capture and Share Learning

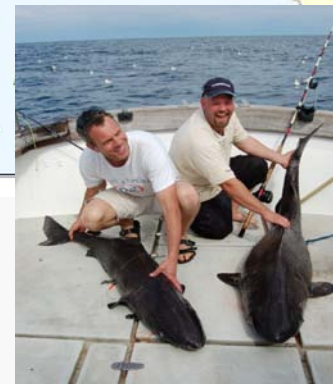
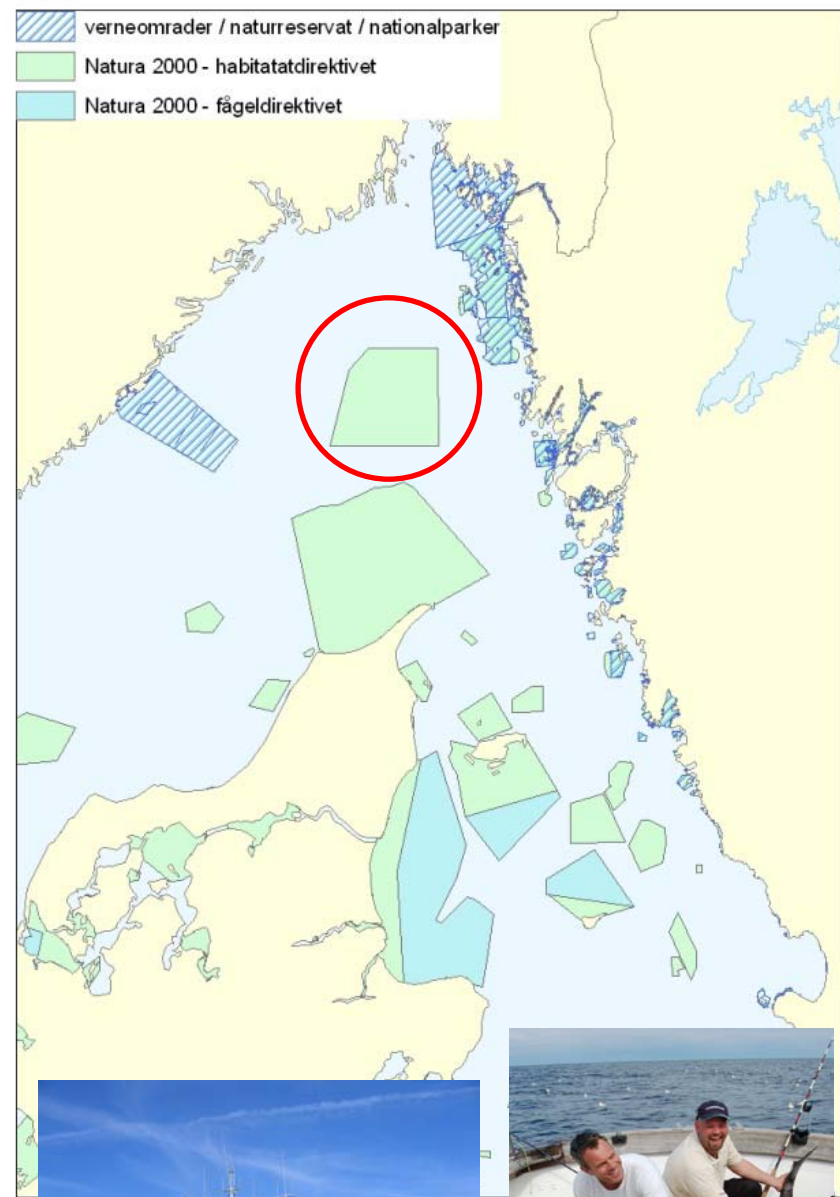
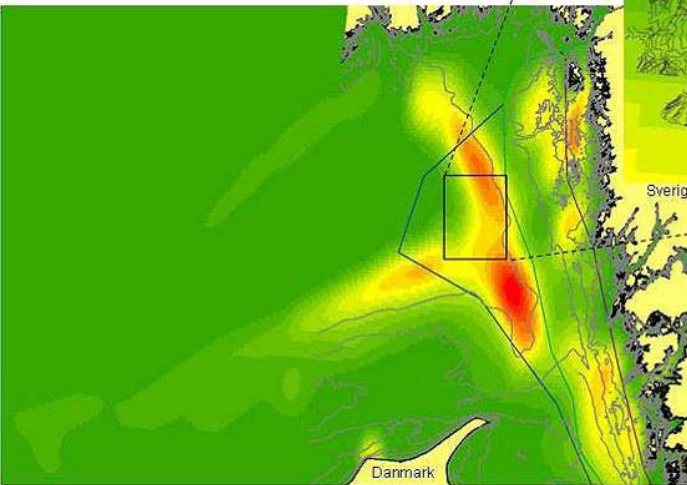
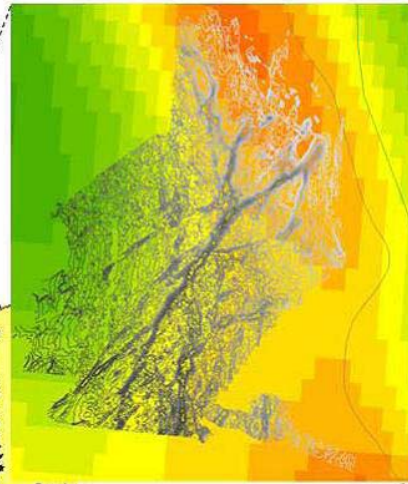
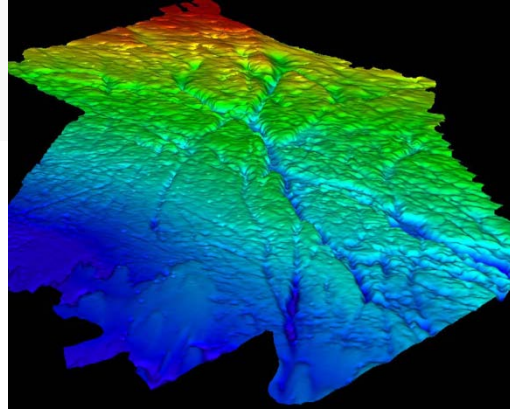
- Document learning
- Share learning
- Create learning environment

# Biological Targets, Impact factors, Ecosystem services & Human welfare based on Adaptive Management (Open Standards) [www.fos.org](http://www.fos.org).



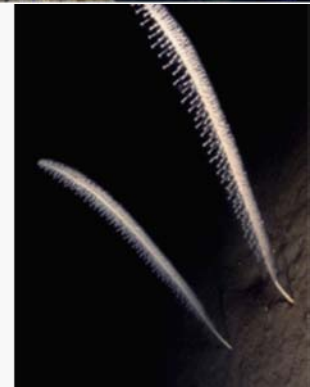
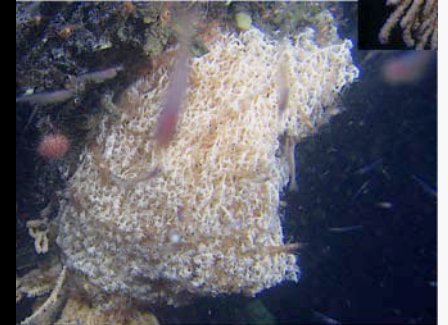
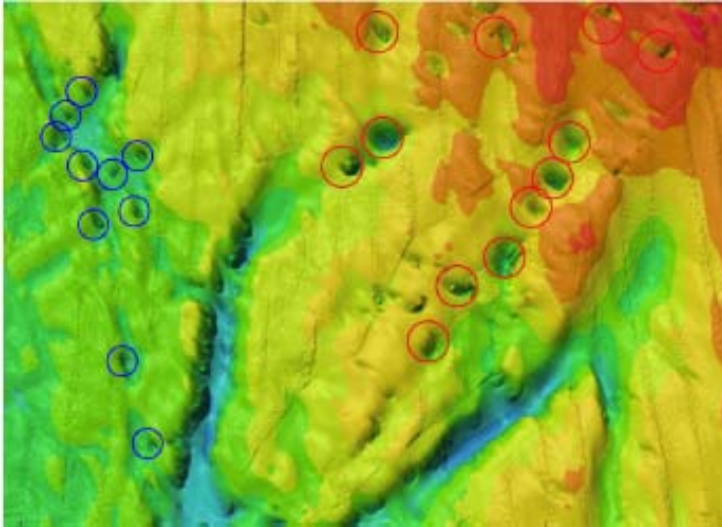


# Network of protected areas within the Skagerrak-Kattegatt area

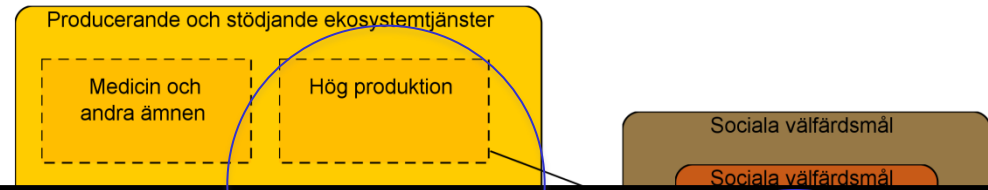




# Nature values to secure



# Ecosystemservices



# Goals for nature values to secure for now and for future generations

Hardbottomorganisms shall not be negatively impacted by:

- Sedimentation due to
- Trawling
- Fishing gear

Three connected areas with pockmarks shall remain untrawled and kept as reference areas

Occurrence of sharks and rays shall not increase

Sponges shall not be negatively impacted by:

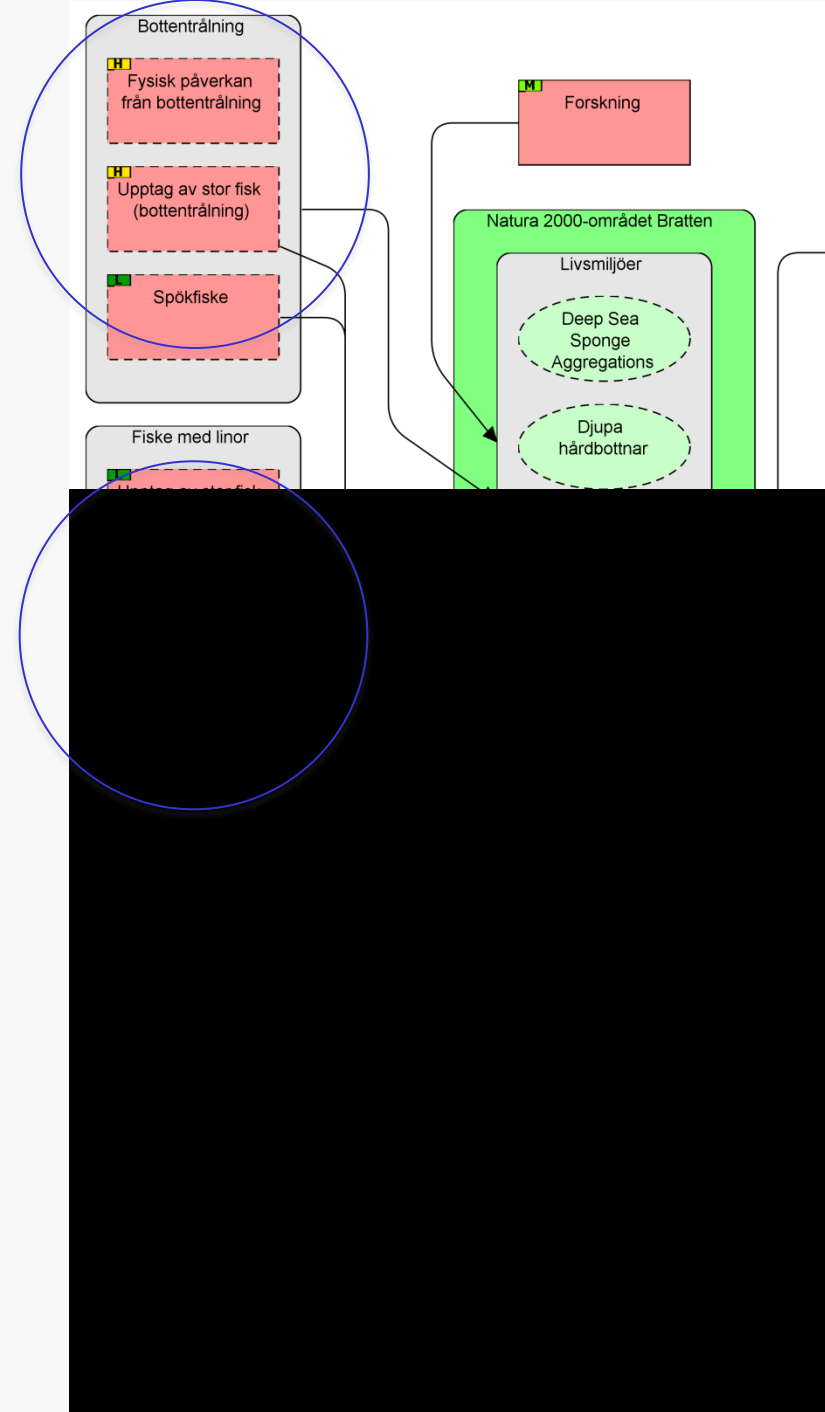
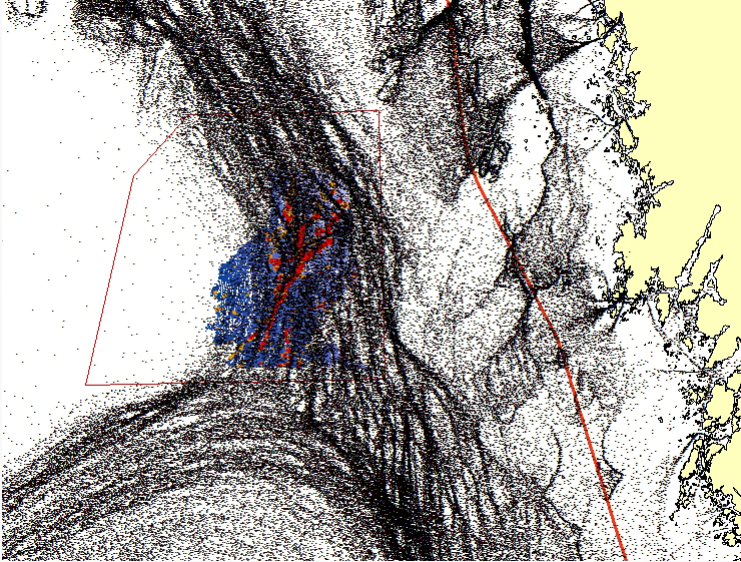
- Sedimentation due to
- Trawling
- Fishing gear

The area of coral gardens shall not be reduced

The area of untrawled seabottom with seapens shall increase

Occurrence of large fish shall not be diminished

# Negative impactfactors





# Impactanalysis

Threats \ Targets	Broskfiskar	Stor fisk	Djupa hårbottenar	Coral gardens	Deep Sea Spong...	Pockmarks	Sea pens and b...	Summary Threat Rating
Fysisk påverkan från fiskelinor och ankare			Low	High	Medium	Low	Low	Medium
Fysisk påverkan från bottenrålning			Medium	Low	Medium	High	High	High
Upptag av stor fisk (bottenrålning)	High	High	Low	Low	Low	Low	Low	High
Upptag av stor fisk (sportfiske)	Medium	Medium	Low	Low	Low	Low	Low	Medium
Upptag av stor fisk (backefiske)	Low	Low	Low	Low	Low	Low	Low	Low
Främmande arter	Not Specified	Not Specified	Not Specified	Not Specified	Not Specified	Not Specified	Not Specified	Not Specified
Forskning			Low	Medium	Low	Medium	Medium	Medium
Spökfiske	Low	Low	Low	Low	Low	Low	Low	Low
Undervattensbuller	Medium	Medium	Not Specified	Not Specified	Not Specified	Not Specified	Not Specified	Medium
Militärt avfall	Not Specified	Not Specified	Not Specified	Not Specified	Not Specified	Not Specified	Not Specified	Not Specified
Militära sprängningar	Not Specified	Not Specified	Not Specified	Not Specified	Not Specified	Not Specified	Not Specified	Not Specified
Marint skräp	Medium	Medium	Low	Low	Medium	Low	Low	Medium
Utsläpp av CO2	Not Specified	Not Specified	Not Specified	Not Specified	Not Specified	Not Specified	Not Specified	Not Specified
Sjunkande olja från fartyg	Not Specified	Not Specified	Not Specified	Not Specified	Not Specified	Not Specified	Not Specified	Not Specified
Orenade kolväten	Not Specified	Not Specified	Not Specified	Not Specified	Not Specified	Not Specified	Not Specified	Not Specified

Summary Target Ratings:

Medium

Medium

Medium

Medium

Medium

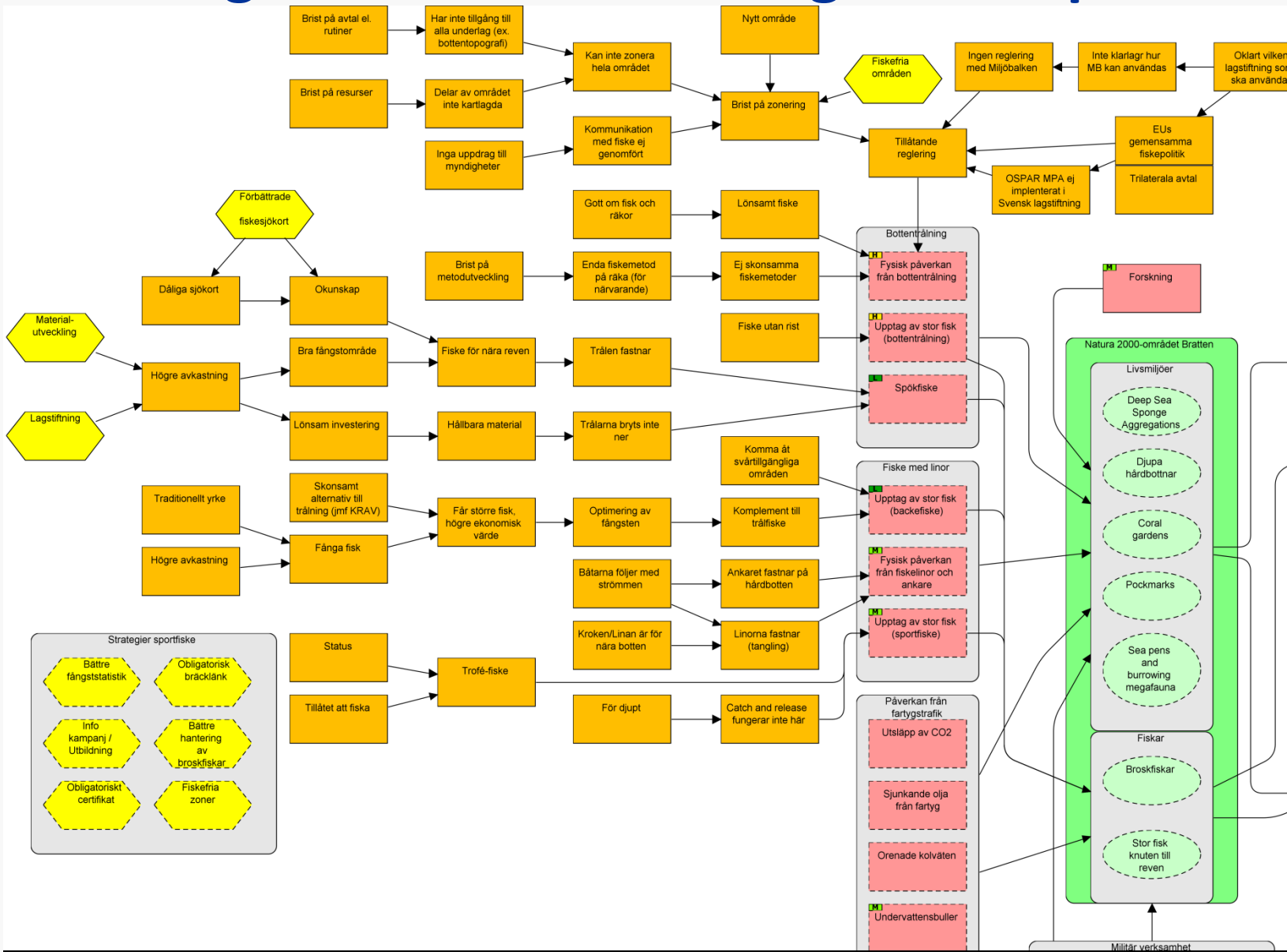
Medium

Medium

Overall Project Rating

High

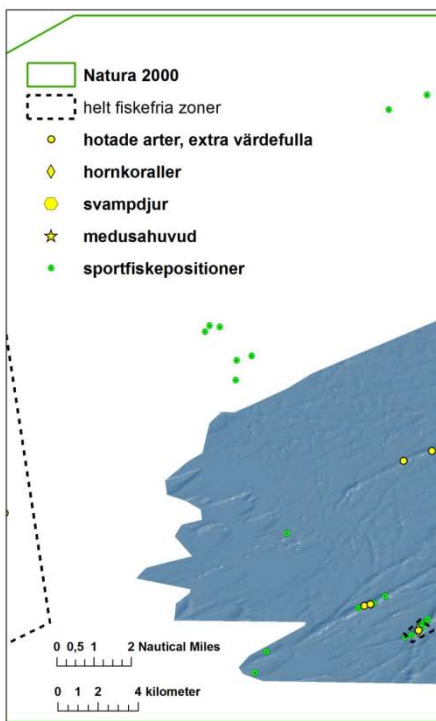
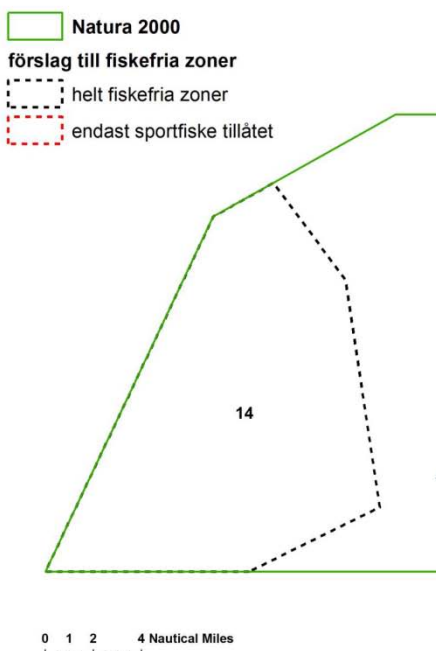
# Strategies to reduce the negative impact



# Dialogue and communication matters - involving stakeholders & decisionmakers crucial for the process

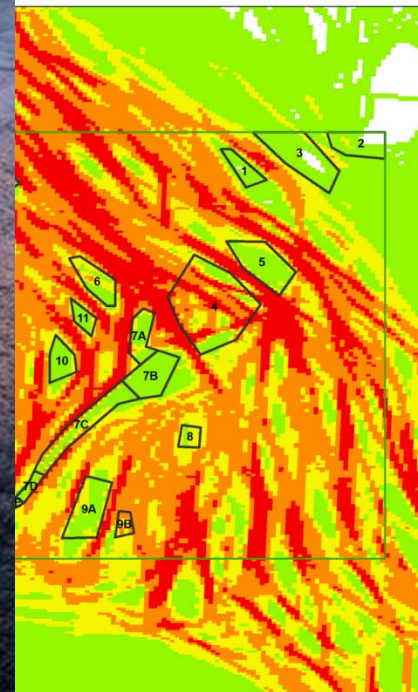
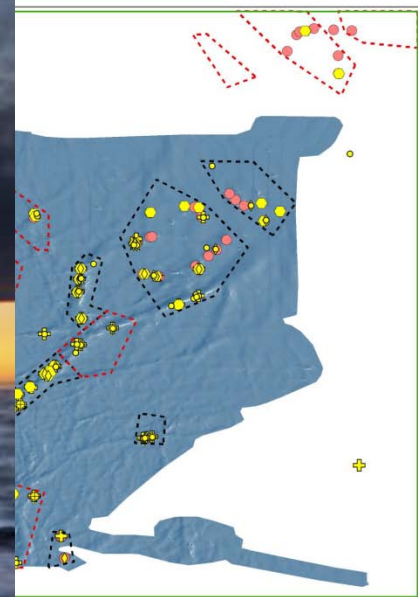






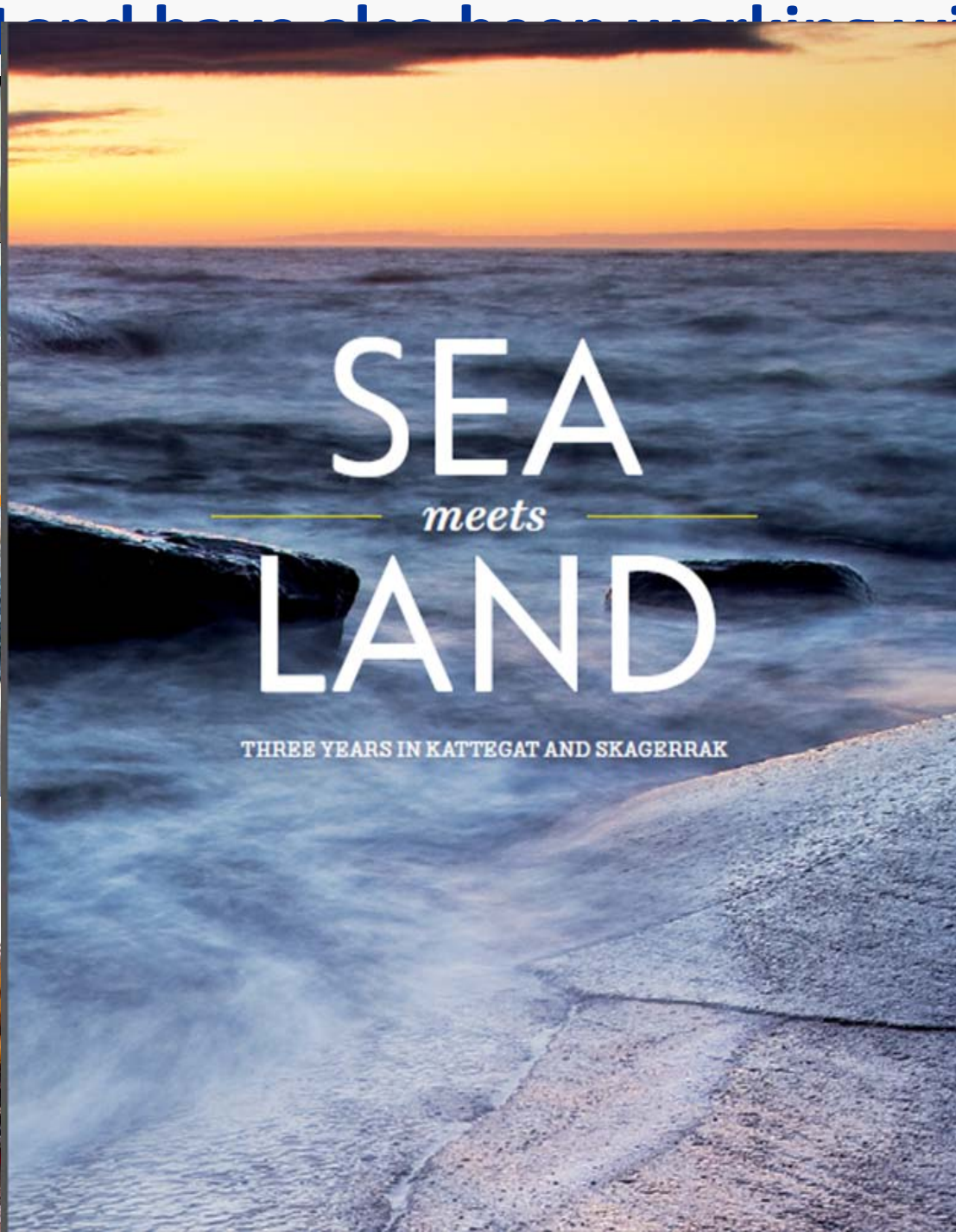
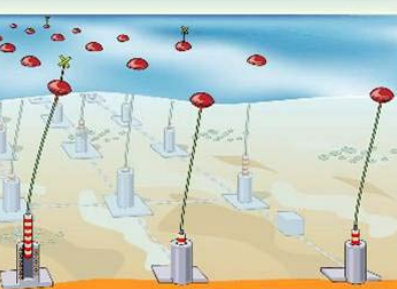
# Förslag till fiskregleringar i Bratten

Rapport från projekt Hav möter Land



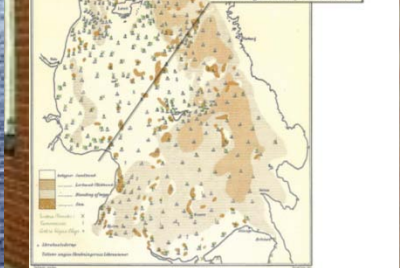
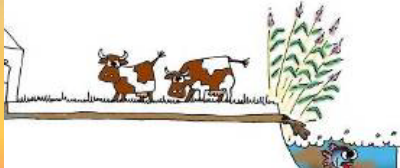


Sea meets land how else has been working with...



# SEA *meets* LAND

THREE YEARS IN KATTEGAT AND SKAGERRAK



more....

**Thank you for your attention!**



**Hav møter Land**

[www.havmoterland.se](http://www.havmoterland.se)

[ingela.isaksson@lansstyrelsen.se](mailto:ingela.isaksson@lansstyrelsen.se)