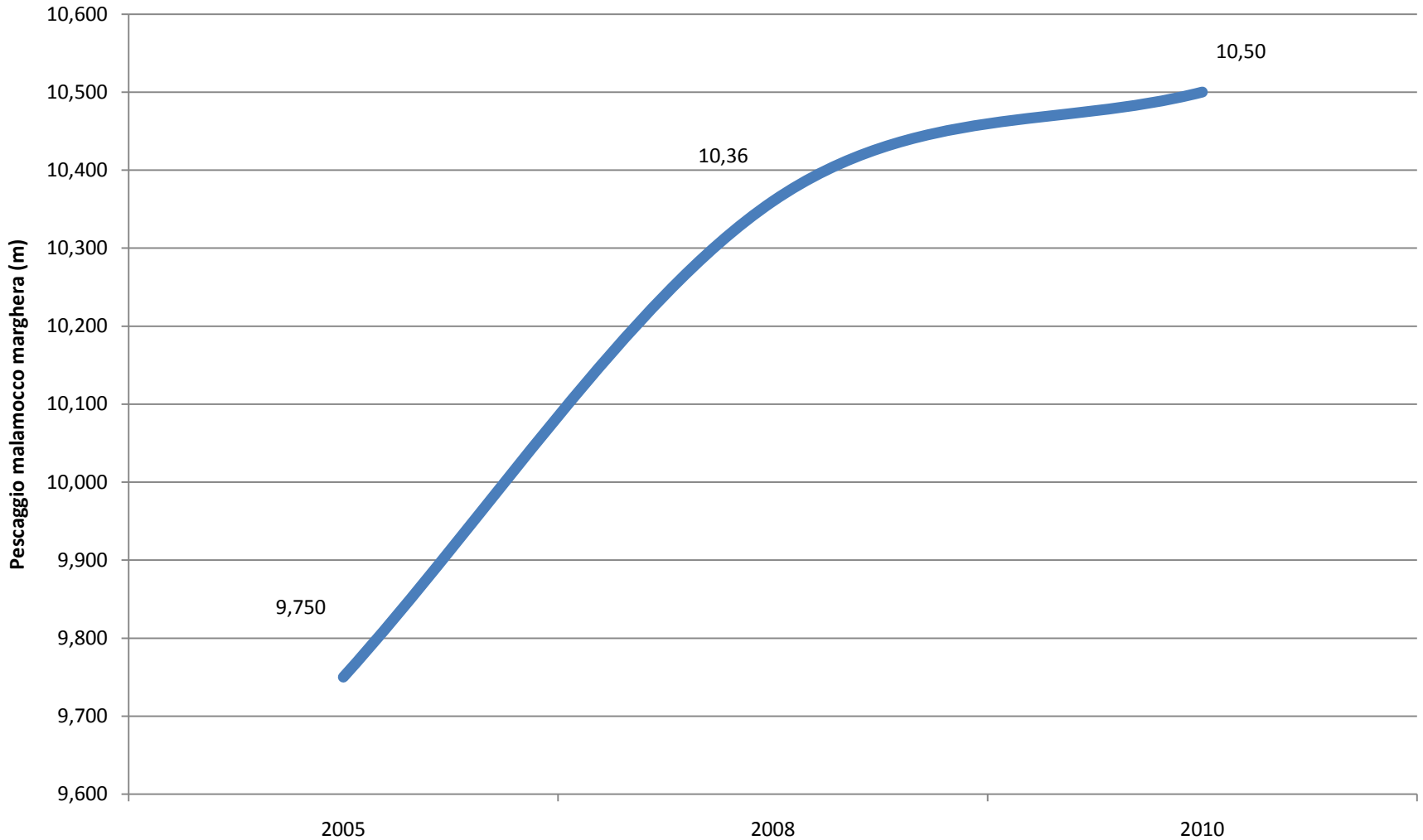


Paolo COSTA,
Presidente Autorità Portuale di Venezia

Pescaggio Malamocco Marghera

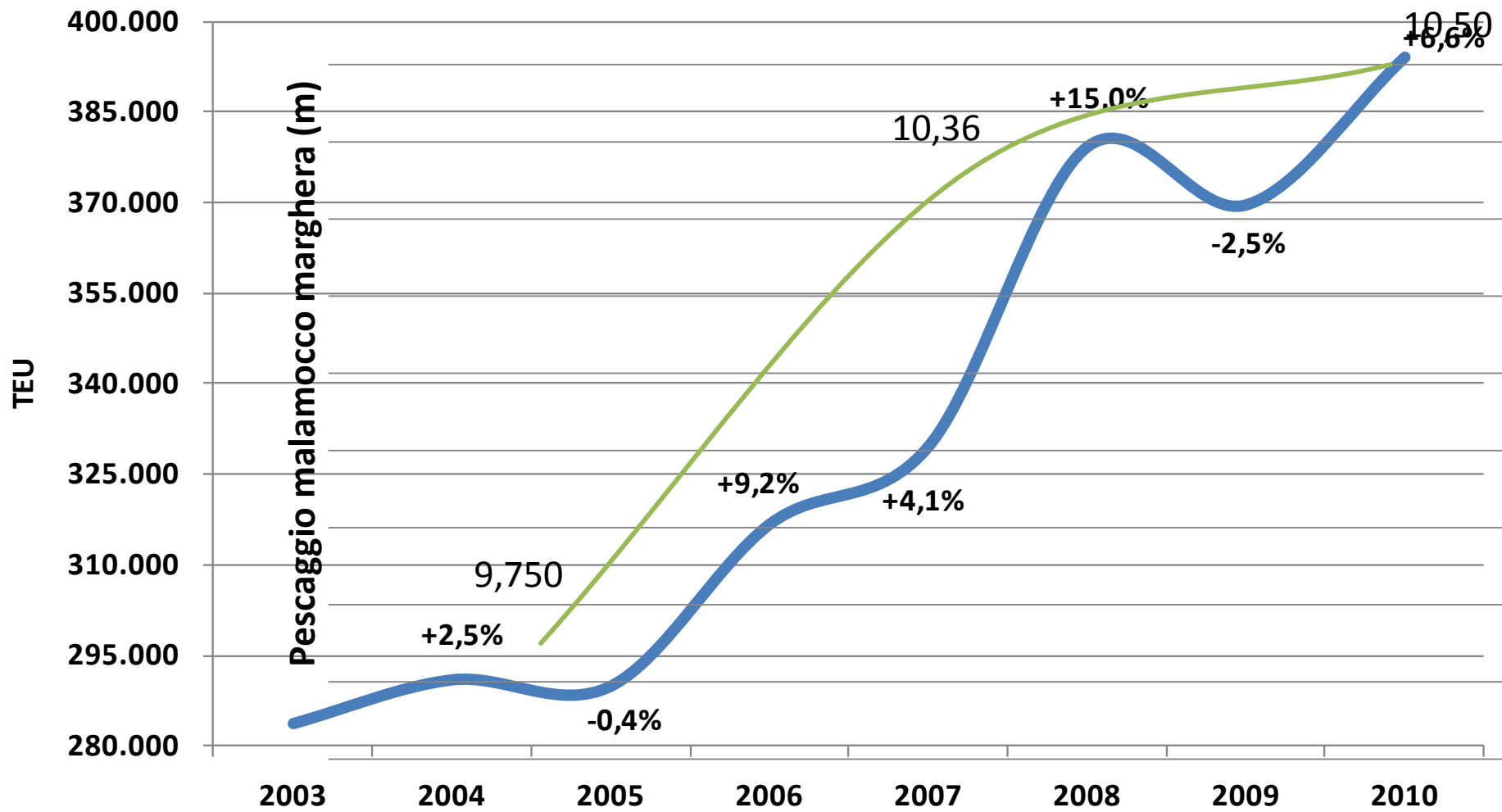


Nota delle Sez. Tecnica e difesa
Portuale del Serv. Sic. Nav. e
Portuale del Reparto
Tec./Ammin.vo della Capitaneria
di Porto di Venezia 20/11/2005

Nota delle Sez. Tecnica e difesa
Portuale del Serv. Sic. Nav. e
Portuale del Reparto Tec./Ammin.vo
della Capitaneria di Porto di Venezia
28/03/2009

Ordinanza Capitaneria di porto -
Guardia Costiera di Venezia numero
82/2010 come modificata dalla
ordinanza 98/10 del 02/10/2010




ANDAMENTO TEU PORTO DI VENEZIA

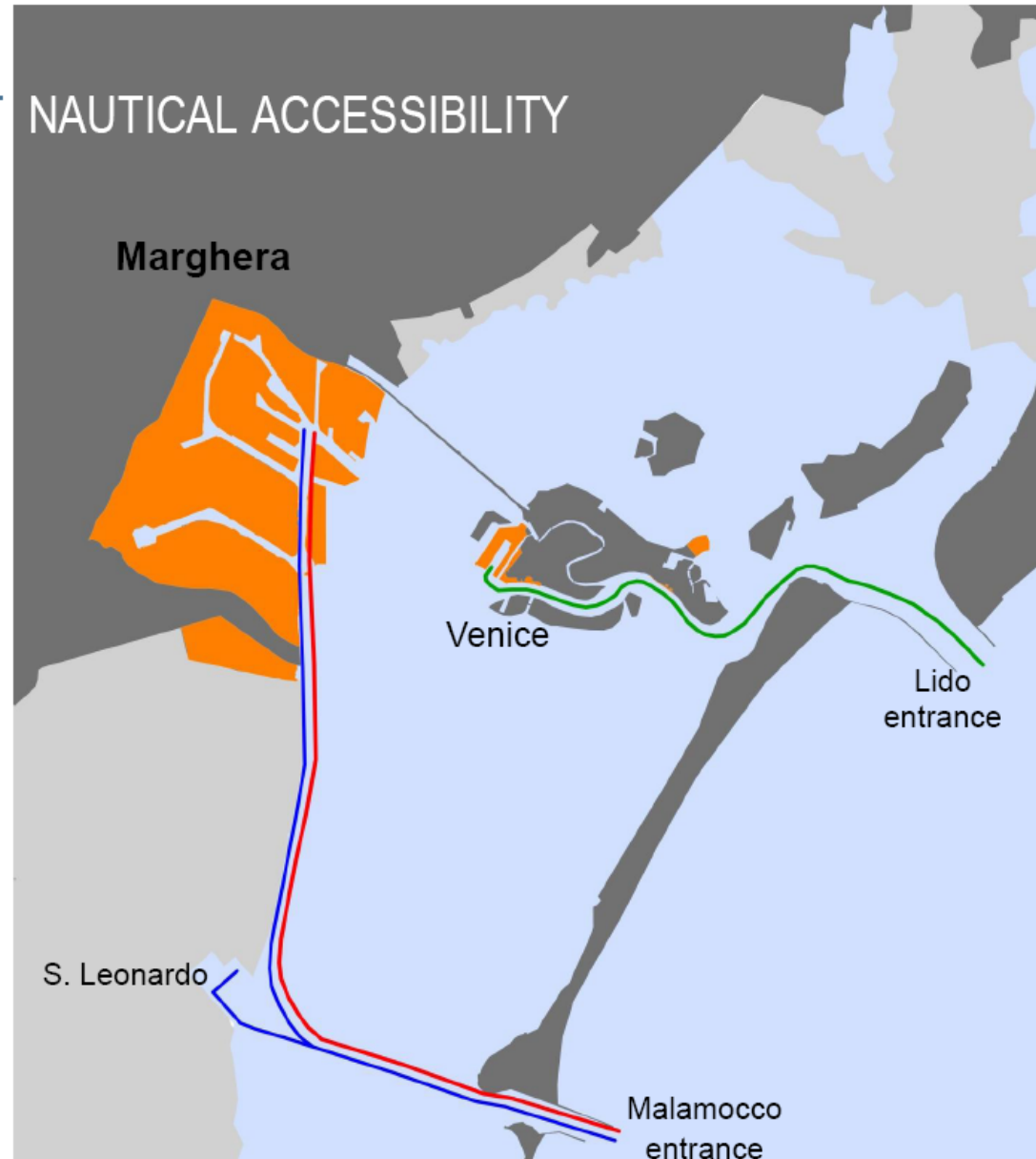


PORTO MARGHERA: CURRENT NAUTICAL ACCESSIBILITY

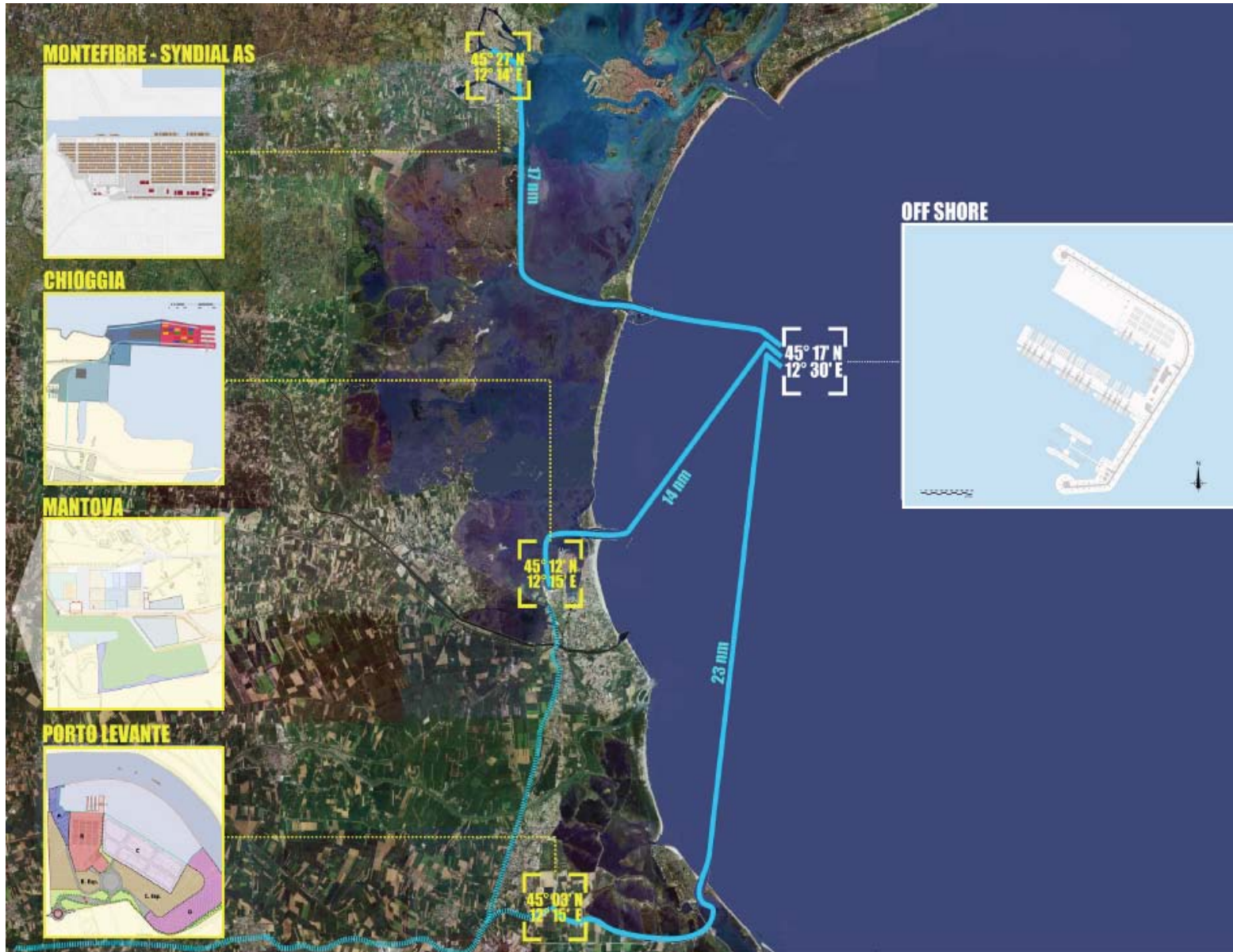
Today, thanks to the excavation carried out in recent years in large navigation canals, access is allowed, in full safety, to vessels with draft up to 12.00 meters until the oil terminal of St. Leonardo and with draft of 10.50 meters in terminal areas of Porto Marghera.

The current excavation program aims to reach again, as per the current Port Plan, the depth of 12.00 meters in Marghera Terminal by 2012

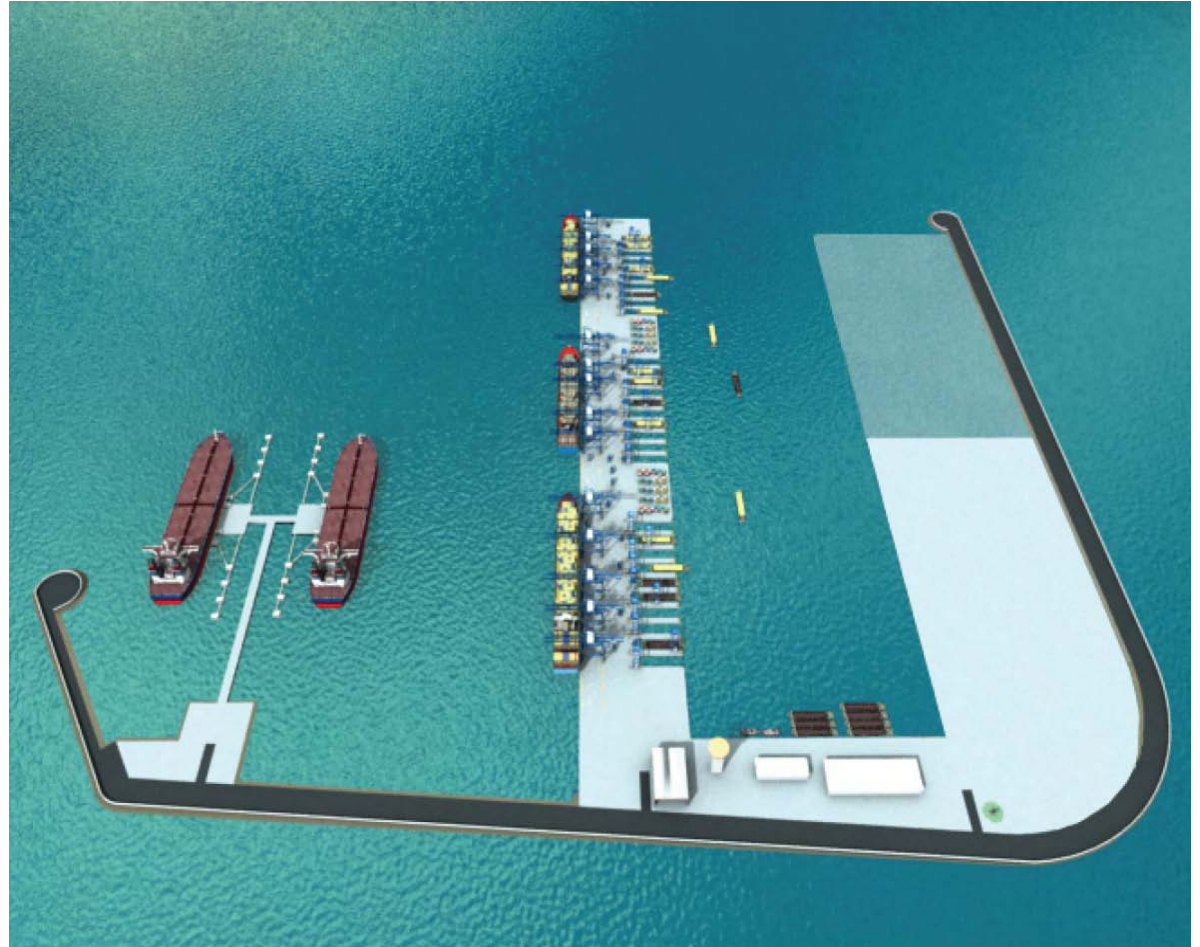
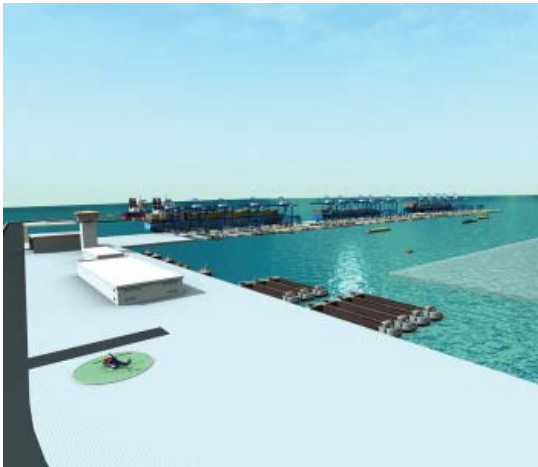
-  Industrial traffic
-  Commercial traffic
-  Passengers traffic



CONNESSIONI DEL TERMINAL D'ALTURA



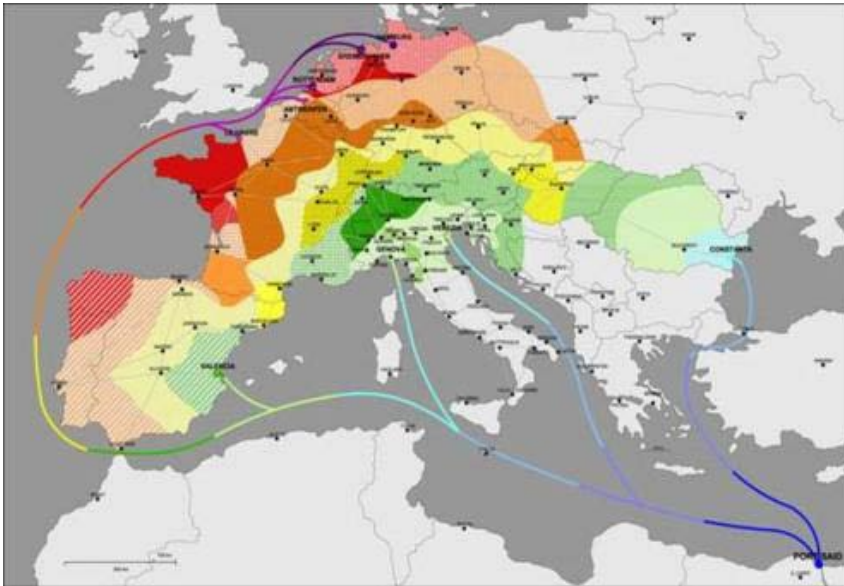
RENDERING DELLA NUOVA PIATTAFORMA PORTUALE D'ALTURA



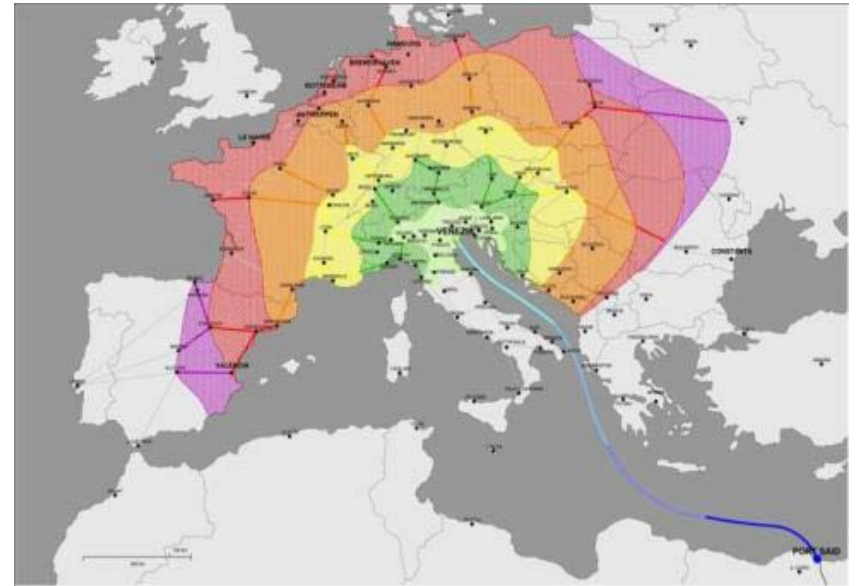
EMISSIONI

Un container da Suez che raggiunge Monaco di Baviera via **VENEZIA anziché via ROTTERDAM riduce le emissioni di CO2 Suez-Monaco di **135 kg/Teu** se movimentato via mare/ferrovia**

Classe di emissione CO2 kg/TEU	0 - 10	11 - 20	21 - 30	31 - 40	41 - 50	51 - 60	61 - 70	71 - 80	81 - 90	91 - 100	101 - 110
Emissioni CO2 marittime											
Emissioni CO2 Multimodali via Venezia											



Emissioni calcolate sulle rotte marine Suez-Europa e successiva distribuzione su ferrovia



Emissioni calcolate sulla rotta Suez-Venezia e successiva distribuzione su ferrovia