



Flanders
State of the Art

Remediation of urban waterways in Flanders - ‘the WHY’ – bluegreen networks - Eeklo example

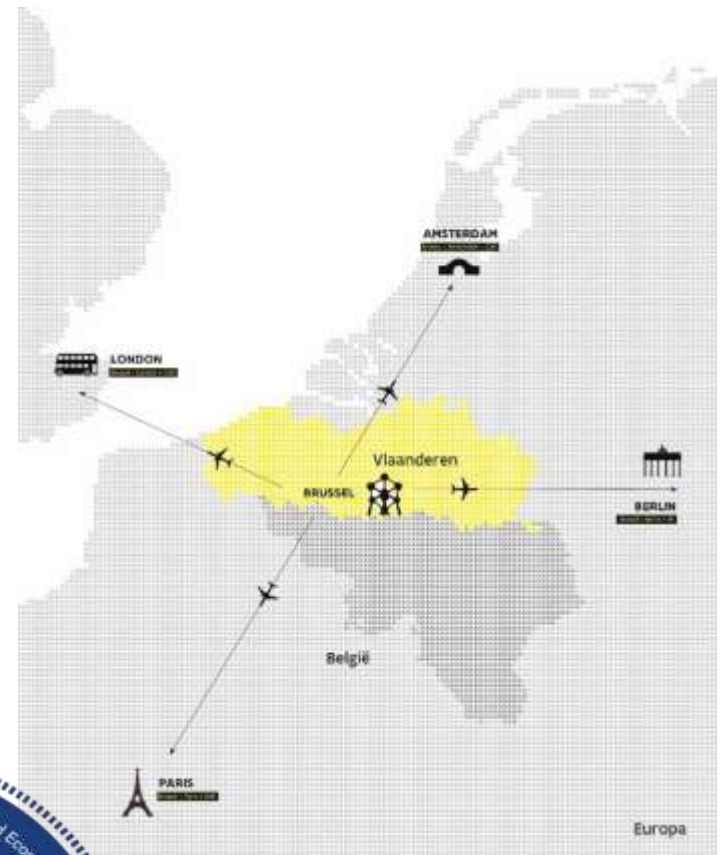
Goedele Vanacker (OVAM)

TOGETHER WE
MAKE TOMORROW
MORE BEAUTIFUL

OVAM

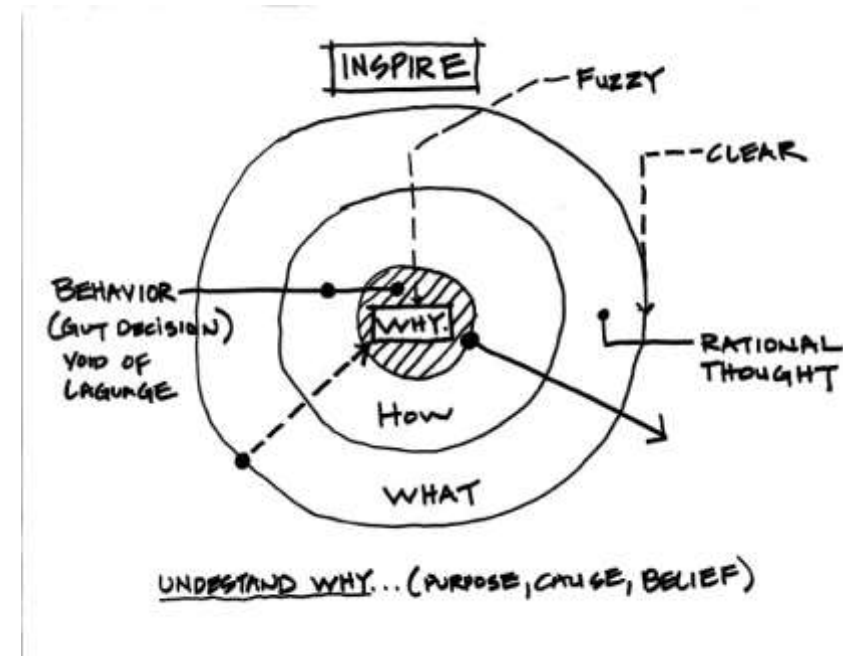
OVAM - Public Waste Agency of Flanders

- ▶ OVAM is the contact point in Flanders for:
 - waste issues
 - environment-oriented use and production of materials
 - soil remediation
- ▶ In the Soil Decree:
 - Chapter on assessment and remediation of contaminated sediments
- ▶ Circular economy:
 - reuse of sediment



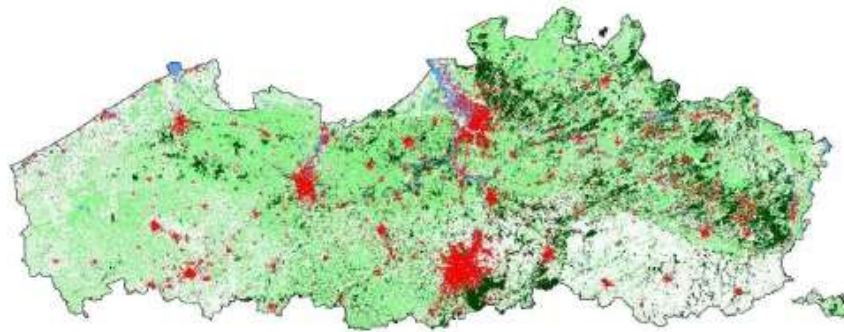
Science => policy => budget => action

- As policy coördinator, I learned the importance of the **WHY**
- “**People** do not buy what you do, they buy why you do it” (Simon Simenek – Ted talk)”
- Know your WHY, maximize your WHY, talk also about opportunities for people and not only about problems with nature
- Ecosystemservices: connect **nature** with value for **society/people**

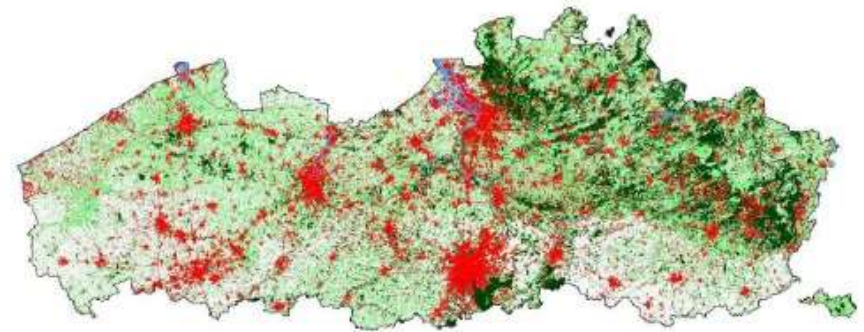




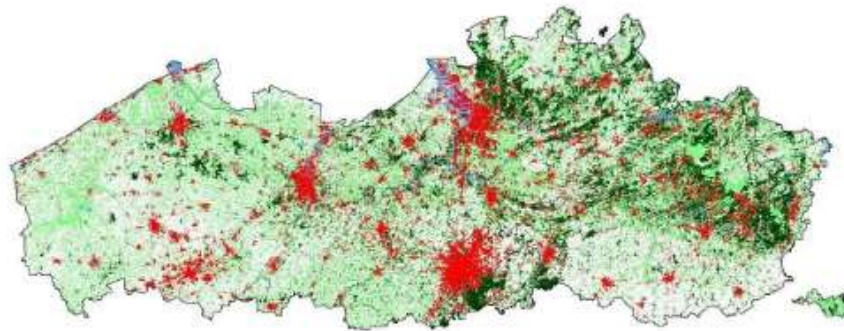
Flanders: ecosystem services of bluegreen networks: important 'WHY' because of 'concrete stop'



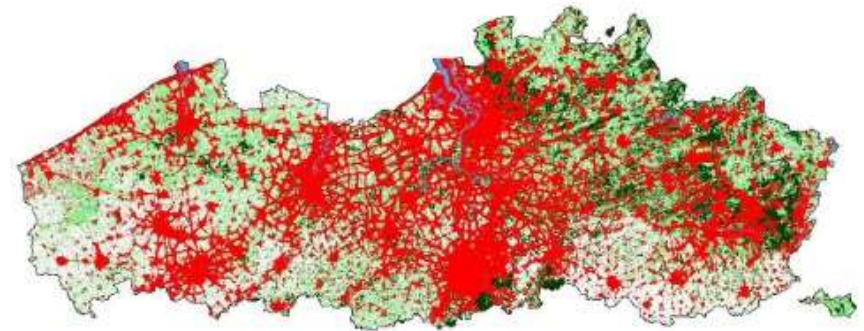
1976



2000



1988



2050?!



Flanders
State of the Art

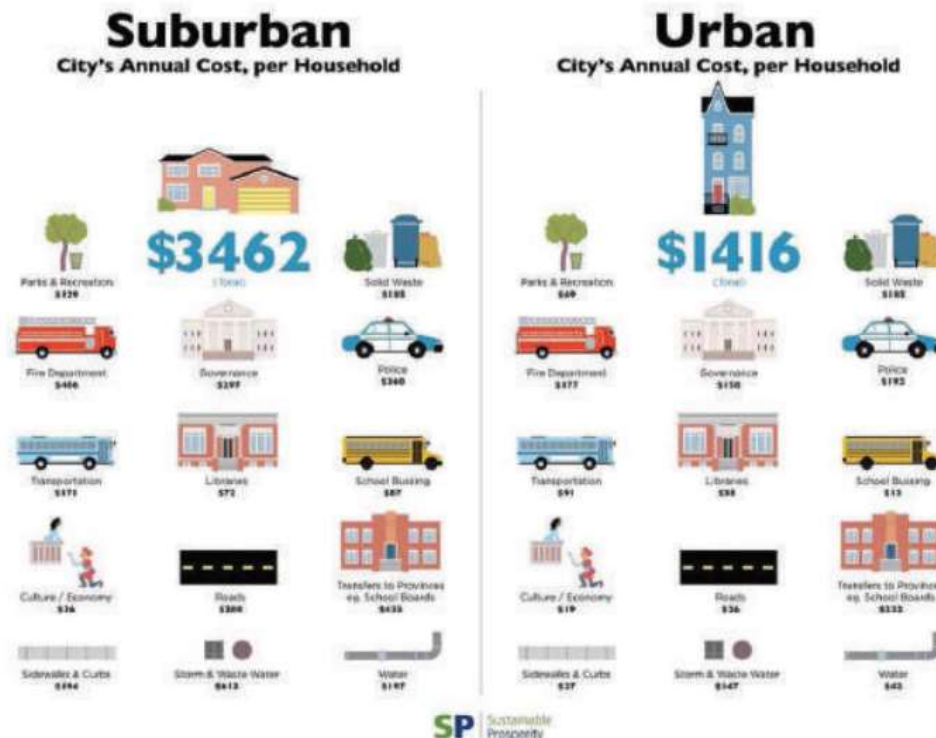
3/07/2017 | 5

TOGETHER WE
MAKE TOMORROW
MORE BEAUTIFUL

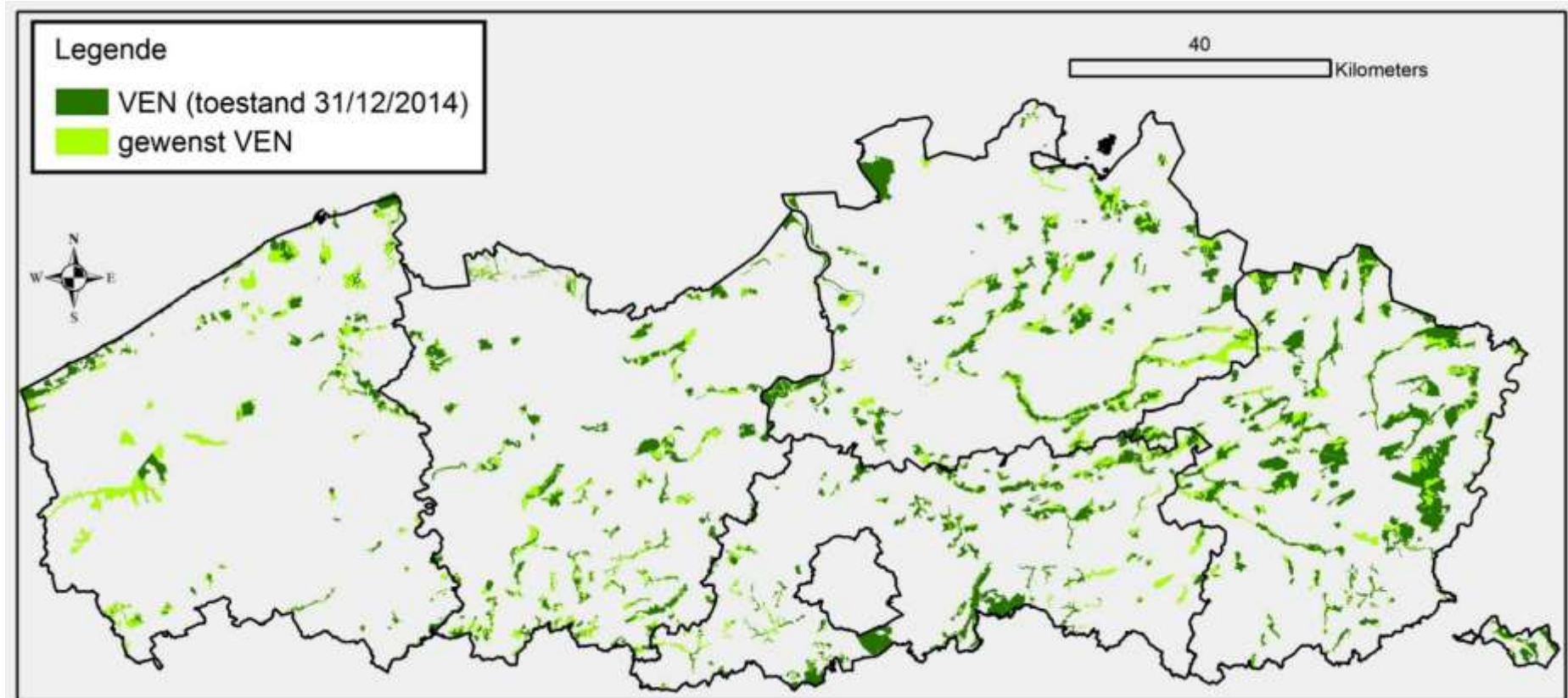
OVAM

‘Concrete stop’ : preserve open space – lower the cost of utilities

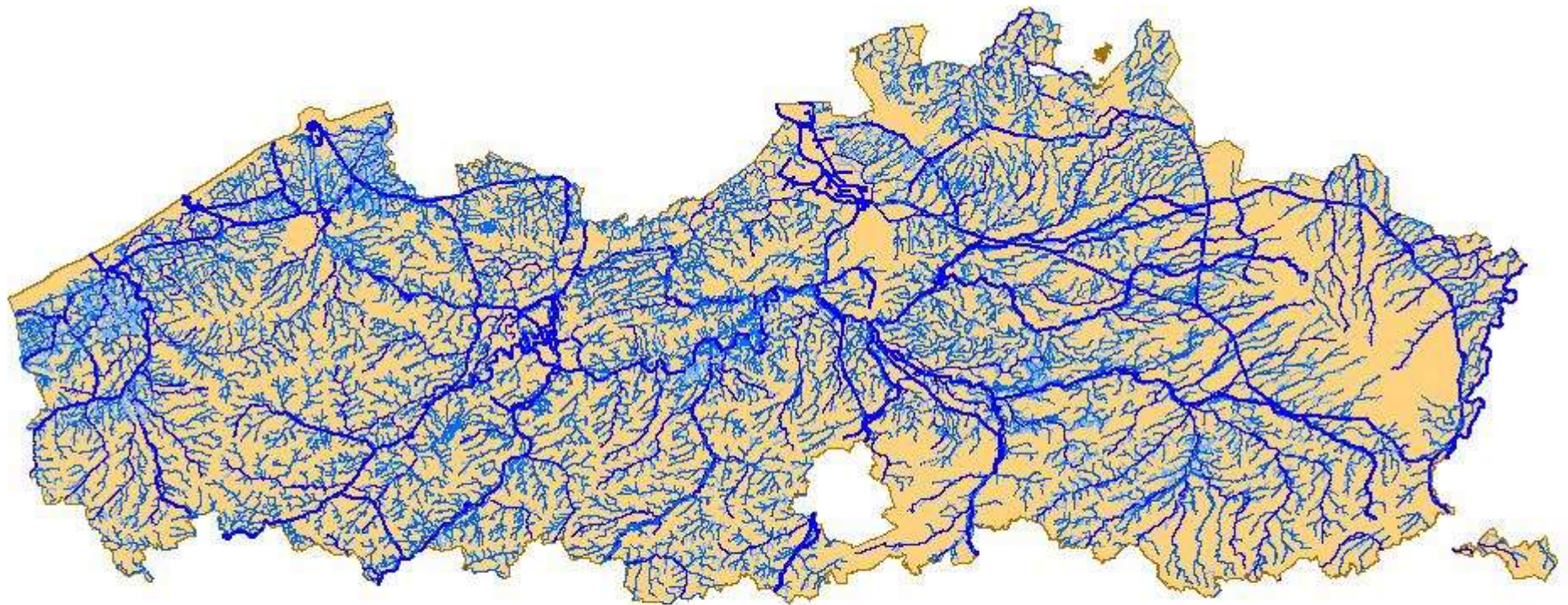
- ▶ Ambitious plan to lower the use of greenfields for building from 6 to 3 hectares a day against 2025 and to 0 hectares per day against 2040.
- ▶ Cities will become more important and the amount of housing units on a hectare will be higher.



Denser cities only livable with more green – but where to create extra green ?



=> bluegreen networks
=> a 'why' for sediment remediation



Vlaamse Hydrografische Atlas, toestand 17-11-2004
Waterlopen

Ecosystem services explain WHY – visual language – bluegreen networks

- **Health and well-being**

Green spots not only provide fresh air but also offer a retreat from urban stress.

- **Green living environments**

Attractive green neighbourhoods and green elements between residences increase real estate value.

- **Climate adaptation**

Green climate-proof environments can help to cope with climate change impacts, such as alternating periods of drought, heavy rain and heat-island effect

- **Water quality improvement**

Enhanced water quality is favorable for people, animals and plants.

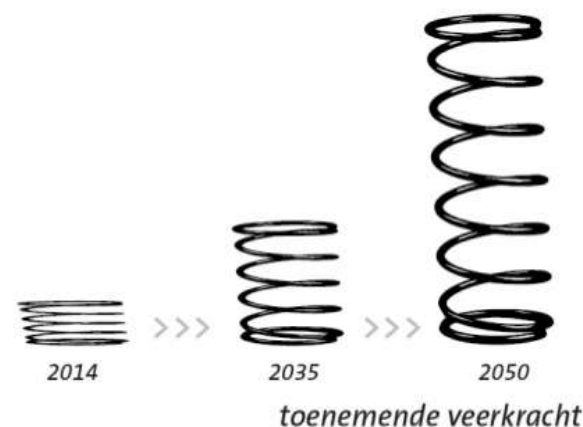
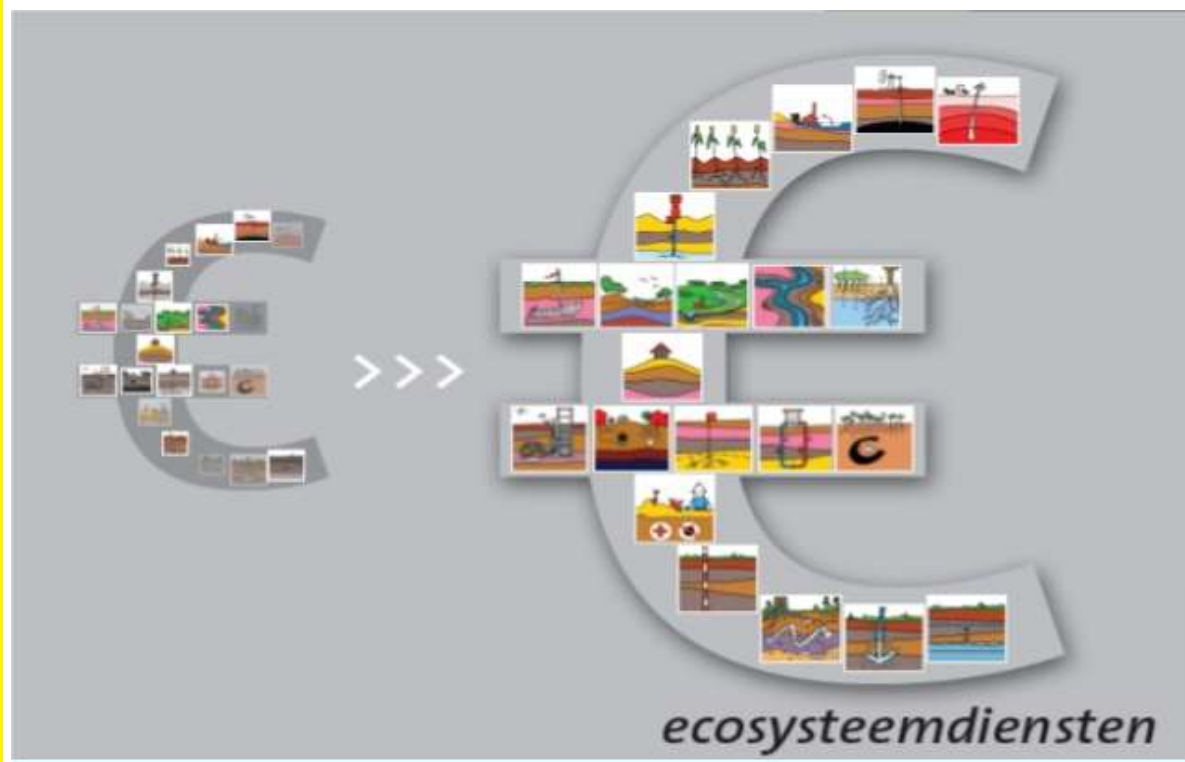
- **Water retention**

Naturally meandering streams not only stimulate biodiversity, but also act as water buffers offering protection against flooding during heavy rainfall events.

... **and more** : see: <http://green4grey.be/en/green-blue-infrastructure/functions>



Ecosystem services help to create extra value and extra resilience for nature and society



25 Juni 2014



25 Juni 2014



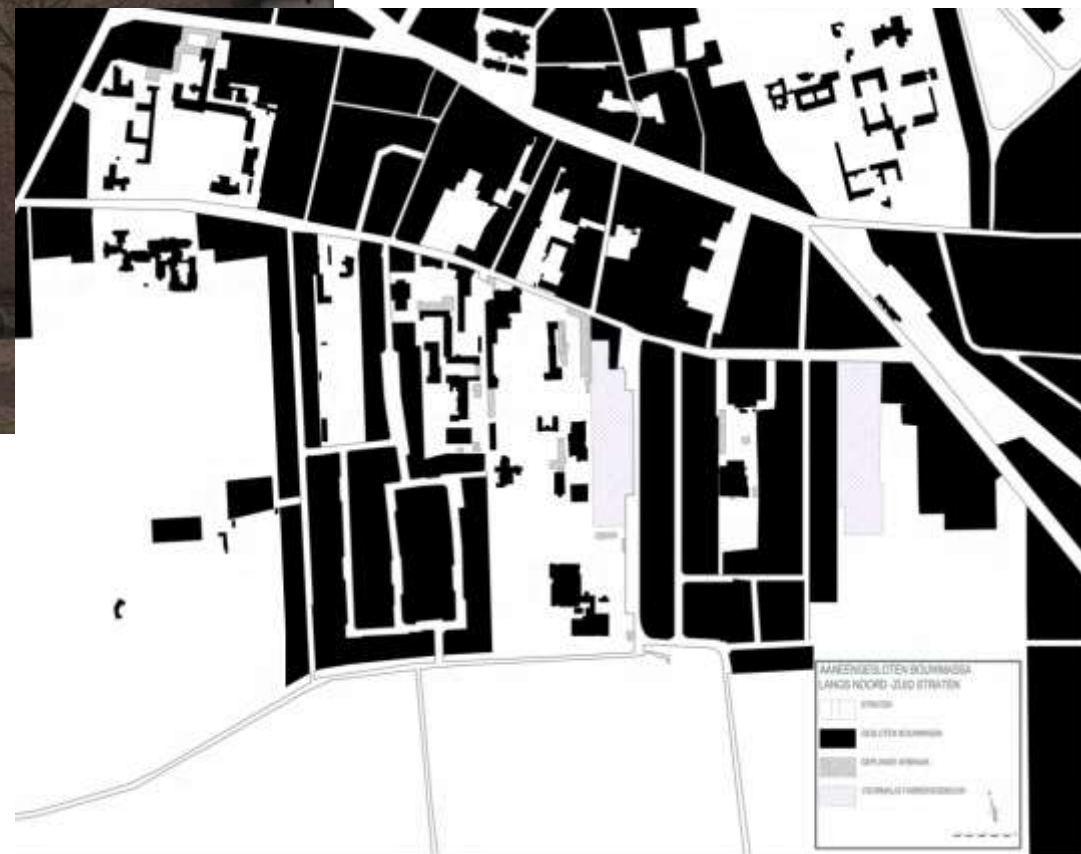
	Habitats/ bio- diversiteit	Water- buffering	Verbetering van de water- kwaliteit	Buitenacti- viteiten in het groen en ontmoet- ingen	Gezond- heid, rust en welzijn	Groene werk- omgeving	Groene woon- omgeving	Duurzame voedsel- productie	Klimaat- adaptatie	Sensibili- satie en doelgroep- participatie
Schans- broek (Genk)										
Slagmo- len (Genk)										
Daute- weyers (Diepen- beek)										
Kerremans- park & Bedrivensite Zellik (Asse)										
Kapit- telbeek (Beersel)										
Woluweveld en Vuilbeek - /Kleine Maalbeek (Zaventem, Kraainem, Wezem- beek- Oppem)										
Molenbeek- vallei en Stierner- beekvallei (visies)										

Eeklo example:

COVINA former textile factory

- Steam Spinning and weaving, dyeing later
- Interwar period: start of massive expansion
- 1959 - 1961: roof / building over the Leiken
- 2004: purchase by developer: Bostoen





Flanders
State of the Art

3/07/2017 | 13

TOGETHER WE
MAKE TOMORROW
MORE BEAUTIFUL

OVAM

Urban redevelopment : trigger for swift sediment remediation – not water quality – biodiversity



- Reopen channel
- Channel as iconic, historical, landscaping element
- Water storage
- Passive recreation
- Nature in the city public park
- Biodiversity (soft bank)



Sullied Sediments



- **better assessment,**
- **better treatment** and
- **better prevention of contamination** in pilot NSR waterways by the new EU 'Watch List' (WL) chemicals, emerging drugs, and nutrients, which are not subject to EU monitoring laws until 2020, but are building up in sediments in these waterways.
- Partners: UK, Germany, the Netherlands, Belgium
- <http://northsearegion.eu/sullied-sediments> or better: subscribe to newsletter by emailing to annabel.hanson@eastriding.gov.uk.

Thanks for your attention

Questions?

goedele.vanacker@ovam.be



Flanders
State of the Art



TOGETHER WE
MAKE TOMORROW
MORE BEAUTIFUL

OVAM