

(Micro)plastics in sediment cores: The examples of Lake Biel, Switzerland and the Trave River, Germany

Georg Reifferscheid, Anja Pregler, Christian Kochleus, Nicole Brennholt,
Friederike Stock

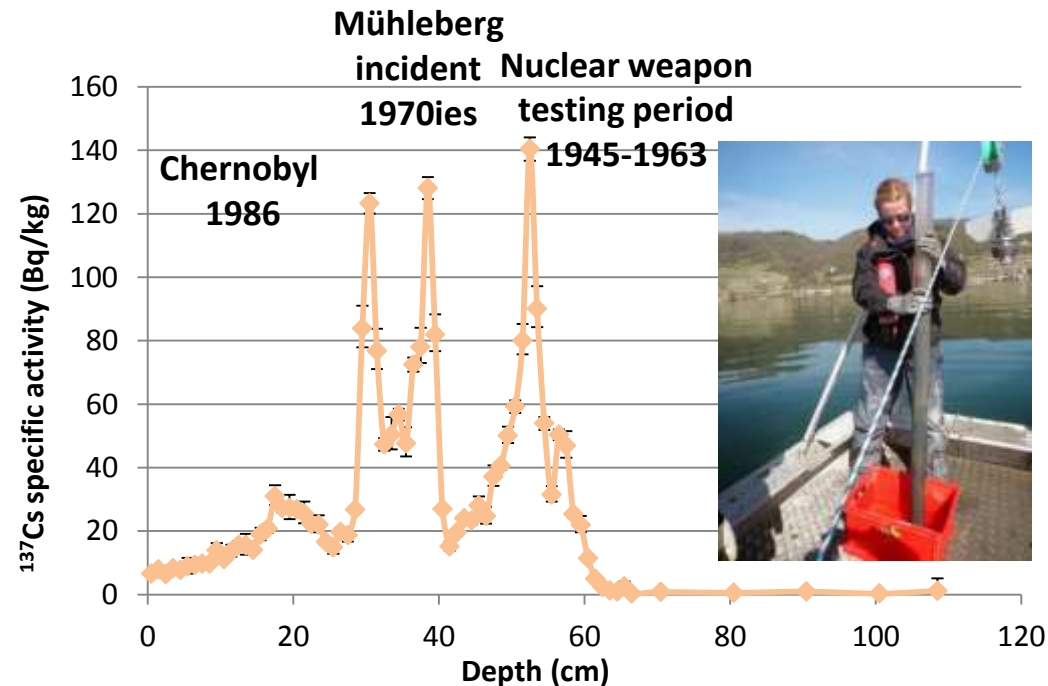
- Measurement of Cs^{137} concentrations
- Correlation of microplastic contamination with a relative dating method



sphere

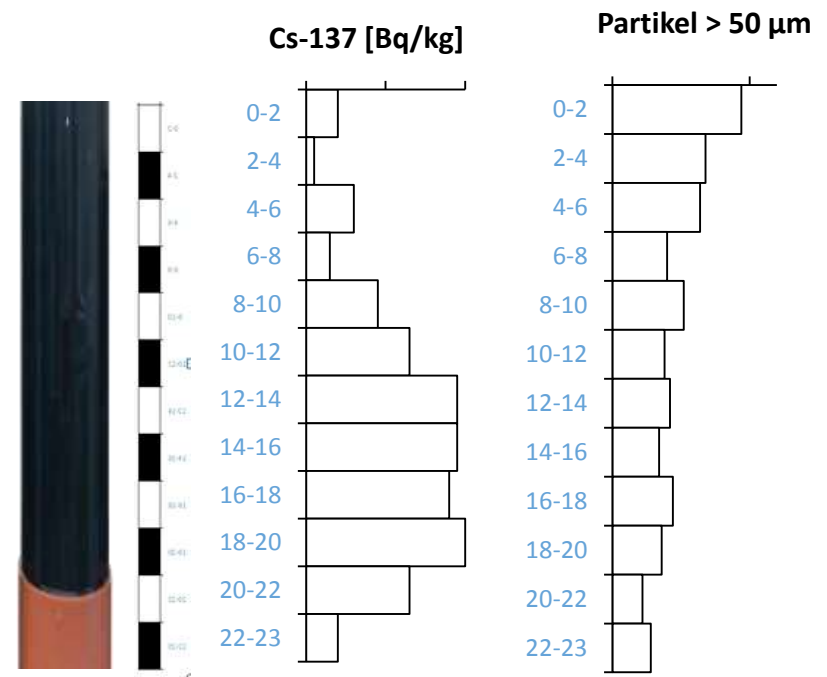
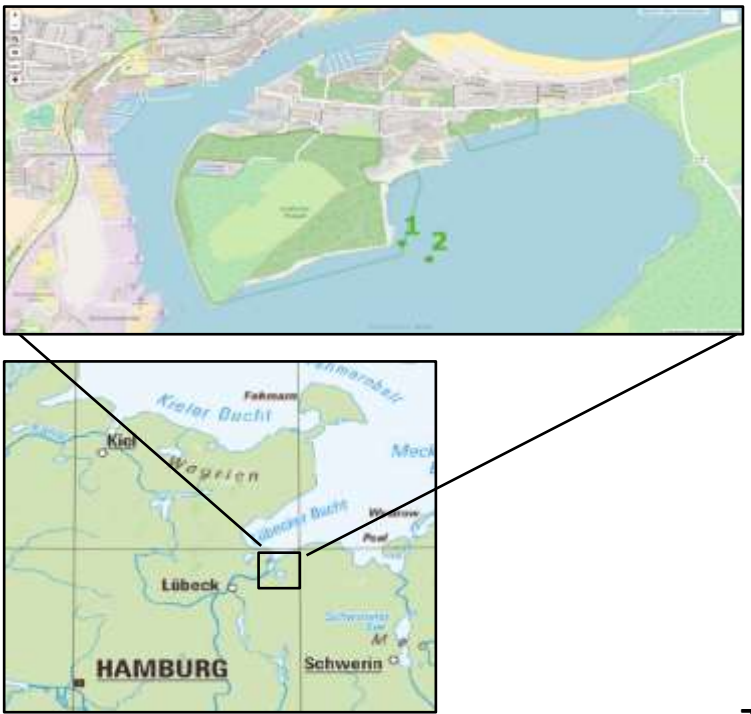
fragment

fragment

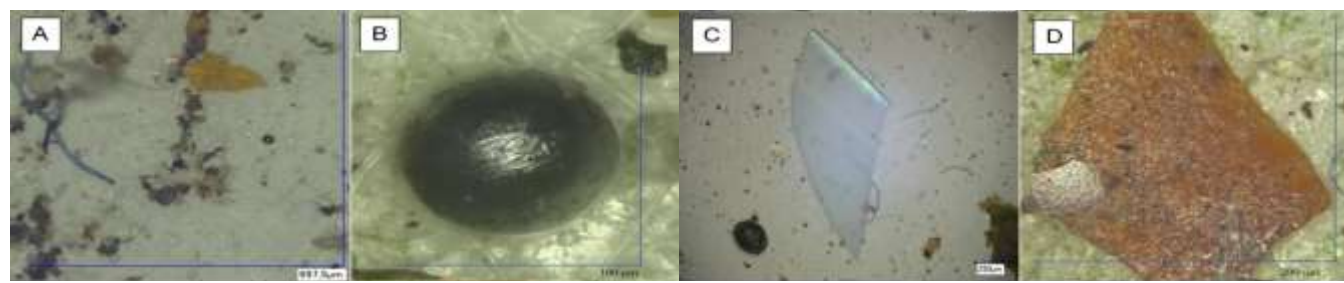


Lake Biel ^{137}Cs -concentration

Results Trave



Trave: Results of ¹³⁷Cs against depth and plastic particles



A: Foil and fibre B: sphere C: fragment D: fragment