



Shifting sedimentation patterns in the Curonian Lagoon under climate change

Jovita Mėžinė¹, Christian Ferrarin², Georg Umgiesser^{2,1}

¹ Marine Research Institute, Klaipėda University, Universiteto al. 17, 92294, Klaipėda, Lithuania

² CNR - National Research Council of Italy, ISMAR - Marine Sciences Institute in Venice, Castello 2737/f, 30122, Venice, Italy

E-mail:
jovita.mezine@apc.ku.lt

Study site and Methods

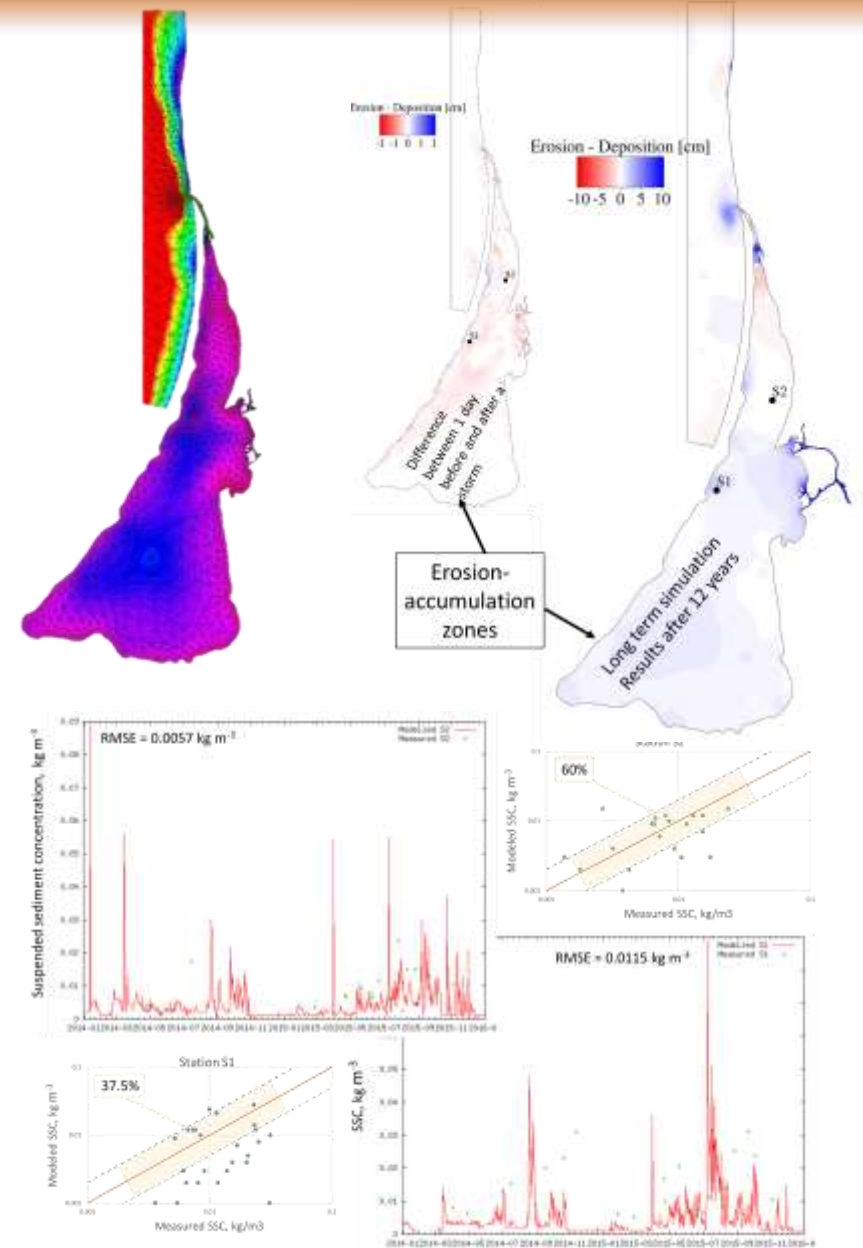
- The biggest lagoon in Europe – the Curonian Lagoon.
- The sediment transport in the lagoon is very little explored.
- The developed sediment transport model gave a holistic view of this system and will lead to the ability to forecast the processes and foresee the measures for mitigation of negative consequences.

METHODS:

SHYFEM: 3D hydrodynamic model based on primitive equations.

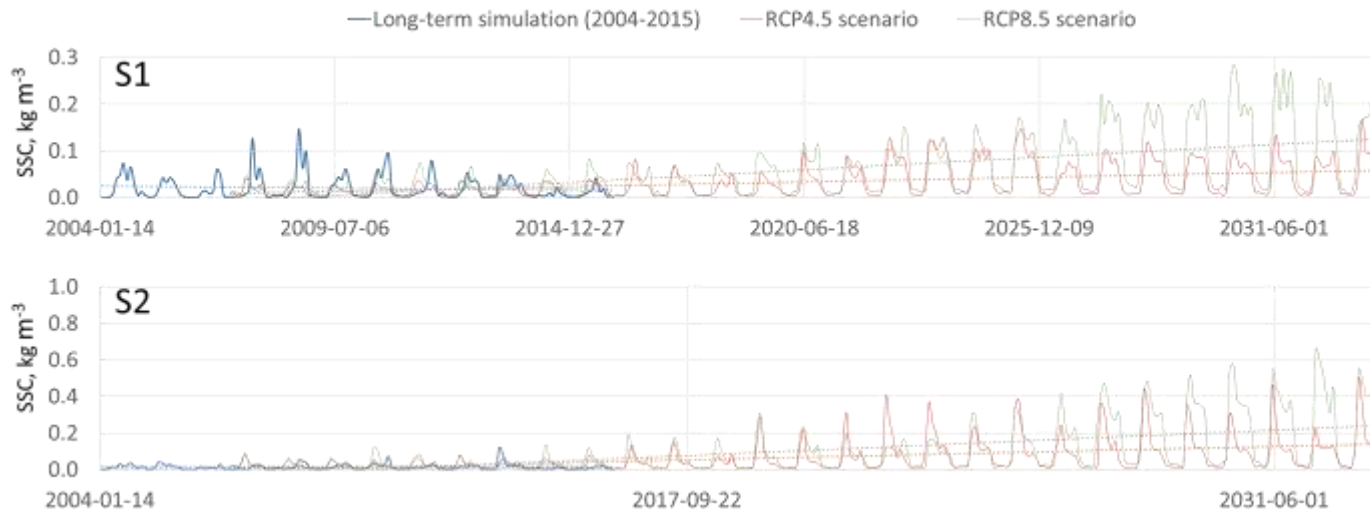
SEDTRANS05 – sediment transport model

Data from the **CLIMATE CHANGE** models



1. General view

- Simulation period
 - 2004-2015
- Analysis of:
 - SSC
 - Ice cover influence
 - Erosion-accumulation



2. Climate change

- Simulation period
 - 2007-2033
- Two scenarios
 - RCP 4.5
 - RCP 8.5

